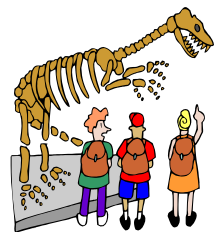


# EVOLUTION & ECOLOGY ADVISING TRACK:

Students pursuing a BS degree in biology may opt for the *Evolution & Ecology* track after two years of required core courses in biology, chemistry, math and physics. At the junior and senior level, the student must take 18 upper level credits including the three strongly recommended courses. Given that many students in the *Evolution & Ecology* track are considering advanced training, we strongly advise that students take Calculus, Physics with a lab, and a number of upper division biology credits that significantly exceeds the minimum requirement of 18 credits.

## Three courses are strongly recommended for the evolutionary & ecology track:

- BIO 333 General Genetics
- BIO 314 General Ecology
- BIO 437 Evolutionary Biology



## We recommend students select the majority of their remaining upper division courses from topic courses or those that survey large taxa, such as the following:

- |                                  |                               |
|----------------------------------|-------------------------------|
| BIO 316 Descriptive Oceanography | BIO 415 Comp. Vert. Anatomy   |
| BIO 317 Biology of Invertebrates | BIO 420 Animal Behavior       |
| BIO 320 Embryology               | BIO 421 Developmental Biology |
| BIO 321 General Microbiology     | BIO 422 Immunology            |
| BIO 350 Plant Biology            | BIO 427 Molecular Biology     |
| BIO 370 Animal Physiology        | BIO 452 Virology              |
|                                  | BIO 430 Statistics            |



## We recommend students take no more than two courses from the more 'specialized' taxon specific list:

- BIO 413 Biology of Fishes
- BIO 414 Biology of Marine Mammals
- BIO 454 Biology of Sharks
- BIO 471 Marine Microbiology

## Examples of potential careers:

- Professor of biology (with emphasis in a variety of areas)
- High school biology teacher
- Laboratory technician
- Conservation biologist
- Environmental consultant
- Museum curator
- Ecologist

