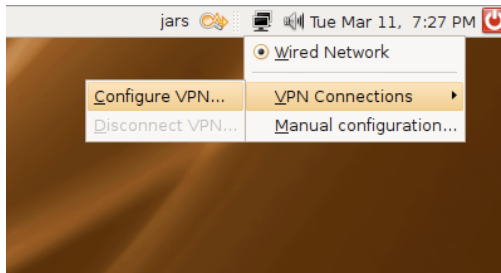


# VPN setup for Linux

In order to connect to the UMass Dartmouth VPN you will need a VPN client. If your Linux distribution didn't come with one you can obtain VPN Connection Manager (PPP generic) from the Add/Remove Applications repository

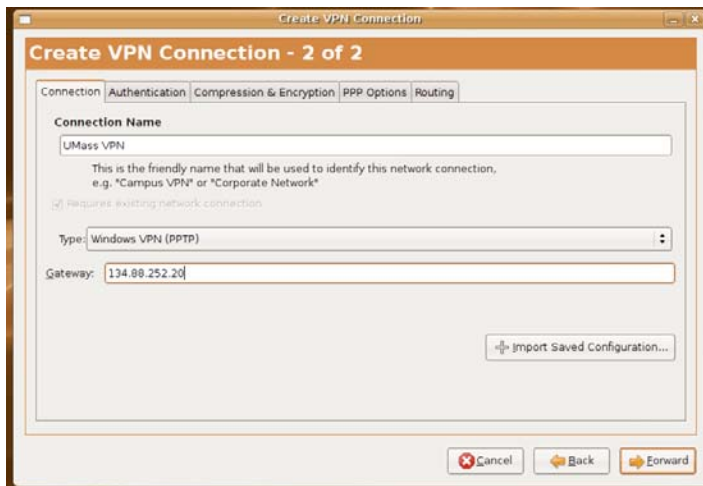


Access your network menu from the system tray and select Configure VPN. Click forward to proceed to creating a PPTP tunnel connection

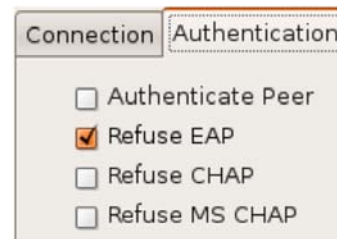


For the Connection Name please enter a name for your VPN

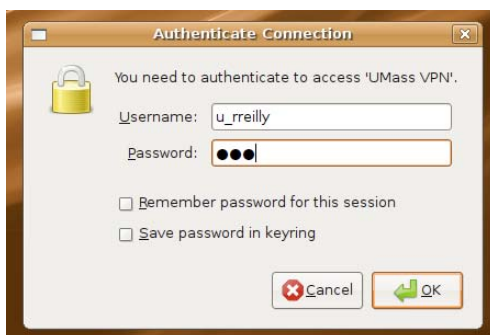
Select Windows VPN (PPTP)



Enter 134.88.252.20 for the Gateway



On the Authentication tab select the Refuse EAP option and Forward to Finish



You can access your new VPN connection from the network menu in the system tray

If you don't have or don't know your VPN username and password please go to <https://email.umassd.edu/password>

\* These instructions are for the Gnome environment. For the KDE environment you can use Kvpnc