

**Rhode Island Undersea Perimeter System Integrated
Defense Environment (UPSIDE)**



**Marine Science and
Technology Business
Opportunities: A Forum for
Partnering**

**Port and Maritime Security
Panel**

1 November 2007

Maritime & Port Security Challenge



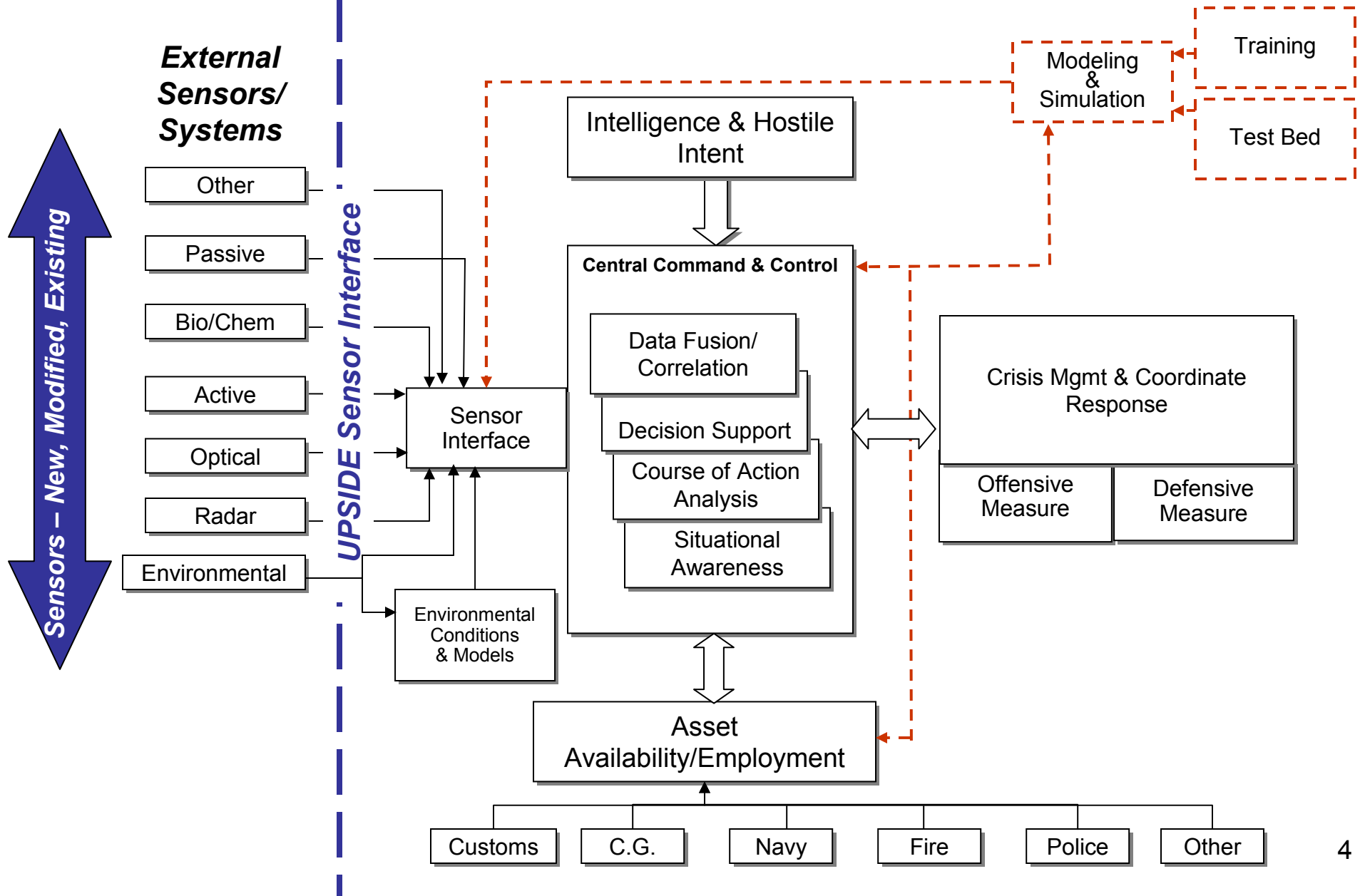
- **Potential threats to maritime assets are increasing**
- **Variety of individual technology solutions being pursued**
- **Overall systems of systems and end to end operational concept is required to counter these threats and conduct system evaluation and support their transition to market**

Project UPSIDE Objectives

- **Provide an integrated, interoperable test bed environment supported by a plug and play infrastructure to support prototype system evaluation in realistic operational scenarios**
- **Provide a simulation environment using relevant scenarios and realistic operational conditions that supports robust end to end system performance evaluation and mission rehearsal training**
- **Provide a comprehensive undersea defense infrastructure capable of interfacing with other maritime domain awareness efforts**

UPSIDE is a Multi-Phased Effort

UPSIDE System Level Framework



Current Project UPSIDE Participants



**Navy
Tech Advisor**



AUV



Smiths Detection-LiveWave

Video Systems



**Demonstration
Host Facility**



Program Manager



- Integrated, interoperable test bed environment
- Simulation environment for preparedness response and training
- Comprehensive undersea defense infrastructure capable of interfacing with other maritime domain awareness efforts



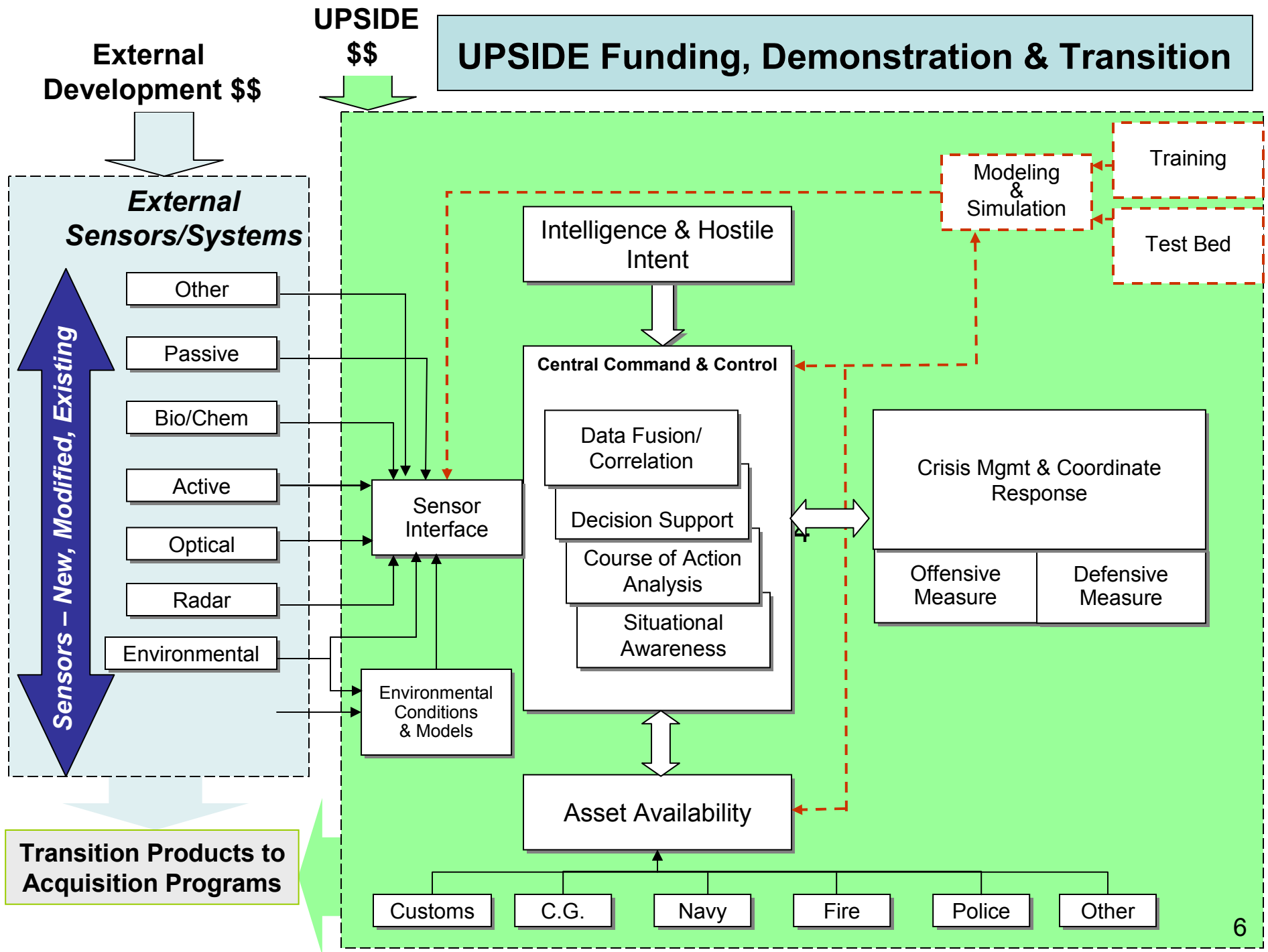
**Tech Agent
System Integration
C&C System**



**Response
Coordination System**



Sonar System



Project UPSIDE Summary

- **Project UPSIDE provides a robust test and evaluation environment for companies to test their prototype systems, demonstrate their utility and support transition to acquisition**
- **UPSIDE design will allow end-to-end testing in an operationally meaningful context**