



Get Started with the Epson BrightLink Pro

The BrightLink Pro is a collaboration and productivity tool that allows you to create a digital whiteboard wherever you need it. Add new blank screens and keep writing instead of erasing your ideas. Insert images, project your content from smartphones, tablets, or laptops, and add annotations. Save your notes and ideas, and share them later.

What would you like to do?

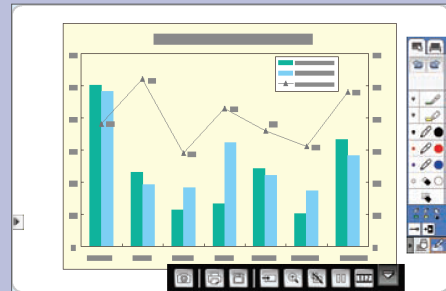
Start writing

Draw on the projected screen with your fingers.



Project from any source

Import content from a connected device directly to your whiteboard.



Bring your own device

Connect your mobile device and display your content on the screen.



Interact with your computer

View your desktop and use your finger as a mouse.



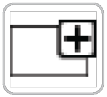
Visit <http://epson.com/blpro> and click the Watch BrightLink Pro How-to Videos link to learn more!

Start Writing

1 Turn on the projector.



2 Start writing.



Running out of room? Add a page!

You can add up to 50 new pages to your whiteboard. Tap the thumbnails at the bottom of the screen to switch between pages.



Add interest by changing colors

Tap a pen color to select the active color. Tap the down arrow next to a pen to choose a custom color. Tap the smaller or larger circle to choose a thin or thick line.



Wipe away mistakes with the eraser

Tap the Eraser icon to enter eraser mode.



Duplicate the page

Tap the duplicate page icon to create a duplicate of the current page as a new page.



Not sure what that icon does?

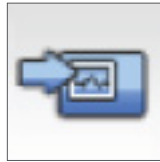
Tap the Help icon to display an on-screen guide to the whiteboard icons.

Open content from a USB drive

- 1 Insert a USB flash drive (formatted for Windows) in the control pad.



- 2 Tap the Insert Image icon to select and display a JPG, PNG, EWF, or PDF page.



- 3 Use your finger to add notes.

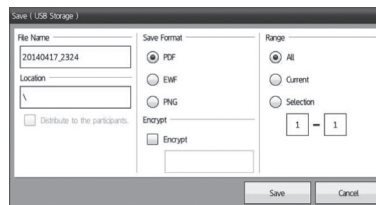


Save your notes

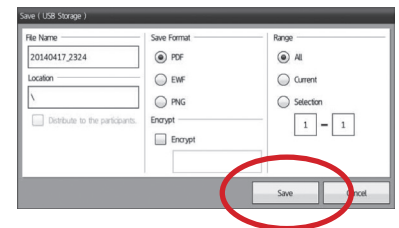
- 1 Tap the Save icon on the bottom toolbar.



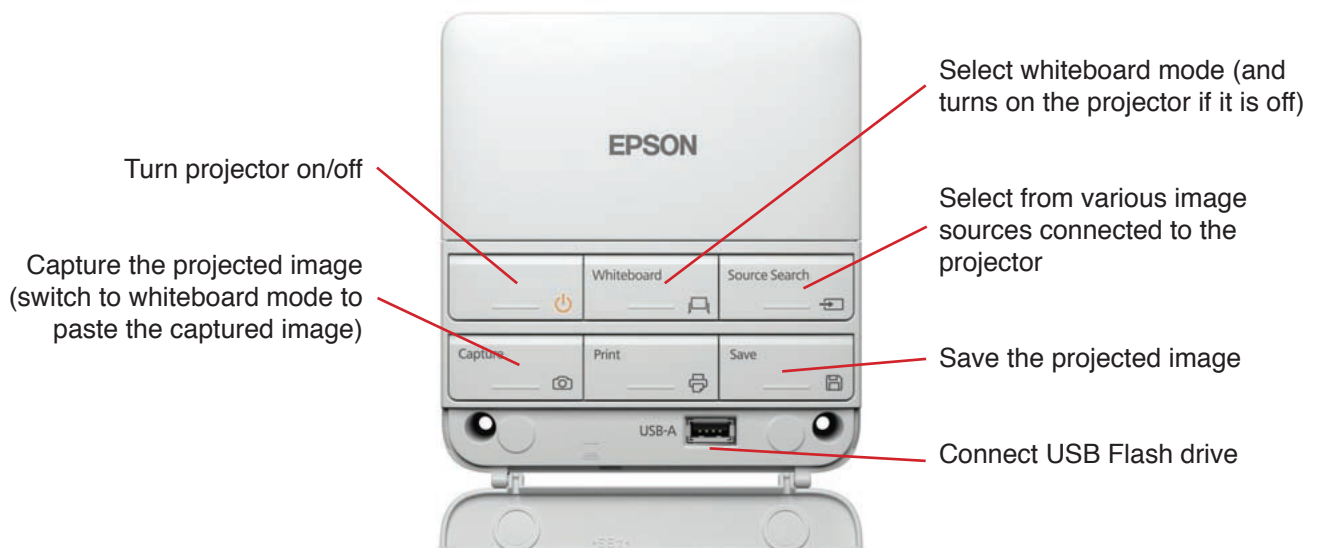
- 2 Select the necessary settings.



- 3 Tap **Save** to save your notes.



Control Pad functions



Bring your own device

First Download the Epson iProjection App

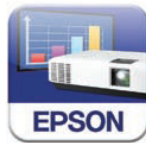
Scan the QR codes below or search for “Epson iProjection” on Google Play or the App Store to download the iProjection app.



With iProjection, you can:

- Display documents, images and even browse web pages
- Annotate directly from your device or BrightLink Pro
- Capture your notes and then save, print or share via email

1 Launch the Epson iProjection™ app on your device.



2 Tap Search by IP address, and enter the information for your learning pod:

Pod	Address
1	LARTSPod1.umassd.edu
2	LARTSPod2.umassd.edu
3	LARTSPod3.umassd.edu
4	LARTSPod4.umassd.edu

3 Tap the Source Select icon *on the projected screen*, then click the LAN button to switch to the device’s source. Enter the keyword shown into iProjection.



4 Display your device content, then start projecting and annotating!



Visit <http://epson.com/iprojection> to learn more.

Project from any source

- 1 Project an image from your connected device. (To connect, see “Bring your own device.”)



- 2 Tap the Source Select icon to select the active source.



- 3 Use your finger to add notes.



Take a snapshot

Tap the camera icon (or press **Capture** on the Control Pad) to save your image and notes as a new screen on the digital whiteboard.



Save your notes

Tap the Save icon (or press **Save** on the Control Pad) to save the image and notes as a single file.



Split the screen

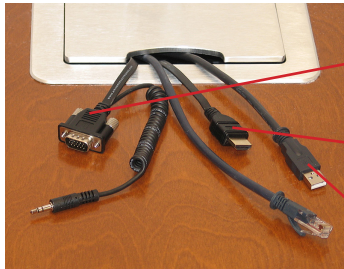
Tap the Split Screen icon to project two different sources side-by-side — even a video conference.



Visit <http://epson.com/support> for manuals, support information, and more!

Interact with your computer

- 1** Connect your computer using the VGA or HDMI cable, **and** the USB cable.



VGA with audio
HDMI
USB

- 2** Tap the Source Select icon to select the computer's source.



- 3** Use your finger as a mouse — launch programs, browse the web, the sky's the limit!



Launch programs

You can use your finger to launch any program on your computer and navigate your file system, right on the screen.

Browse the web

Browse the web in any browser; view web pages, download files, and view videos.

Play videos

Play videos on your computer and display them on the screen.

Use your finger as a mouse

Mouse command	Finger action
Click	Tap
Double-click	Double tap
Click and drag	Tap and drag
Move cursor	Hover over board
Right-click	Tap and hold finger for 3 seconds

Do More!

You can do much more using the Easy Interactive Tools software for Windows and Macintosh OS.

Visit the site below, then click on the link for the BrightLink Pro 1430Wi. Click the Drivers and Downloads link. Select your operating system from the pop-up menu provided, then click the Utilities bar. Click the Download link next to Easy Interactive Tools.

Remember to touch the projector screen then tap the Switch Modes button to change from Interactive mode to Whiteboard mode.



Visit <http://epson.com/brightlinkdownloads> to download drivers and the Easy Interactive Tools.