


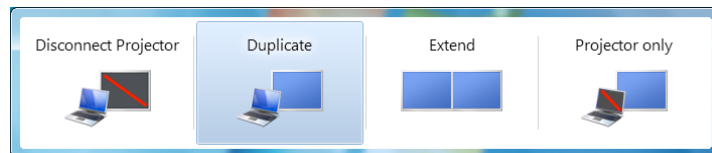
Adjusting Screen Resolution on your Lenovo T410 Notebook

The Lenovo T410 Notebook usually detects any externally connected display such as an overhead projector, and adjusts the screen resolution automatically. It is not necessary to turn the computer off or put it to sleep.

The default mode for external displays is called an *extended desktop*. With an extended desktop, the menu bar stays on the main (built-in) screen, and the external screen can be used as additional screen space for viewing documents. In the classroom, the desired display mode is *mirrored*. In mirrored or *duplicate* mode, the same image is shown on both the internal and external displays.

To switch between the mirrored and extended desktop modes, press the <Fn> + <F7> keys on the keyboard. The <Fn> key is located in the lower left of the keyboard, and marked in blue. The <F7> key is marked with a double rectangle like this: 

When these keys are pressed, the Display Options bar is shown, as seen here:



To turn off the video signal to the external display, click **Disconnect Projector**.

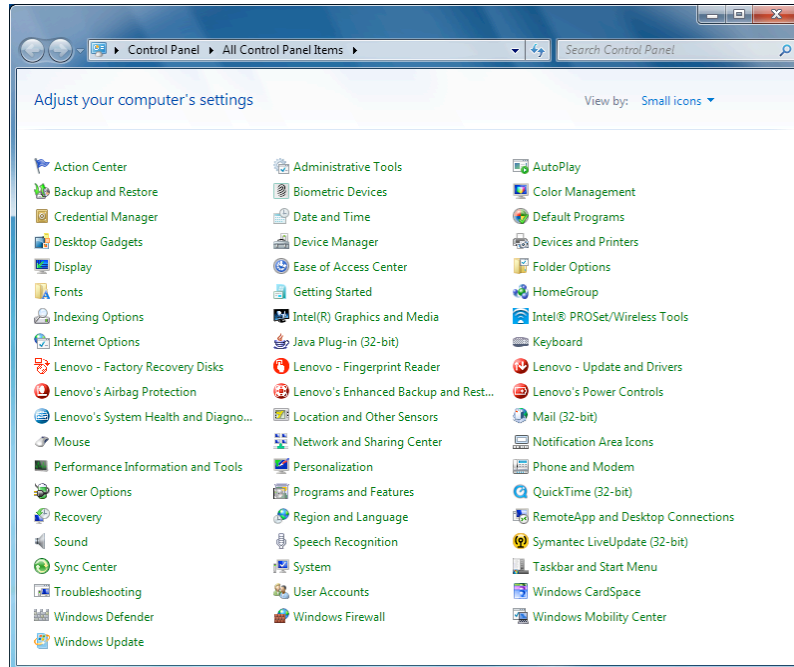
To mirror the built-in and external displays, so the same image is shown on both, click **Duplicate**.

To use an extended desktop, click **Extend**.

To turn off the built-in display and use only the external display, choose **Projector Only**.

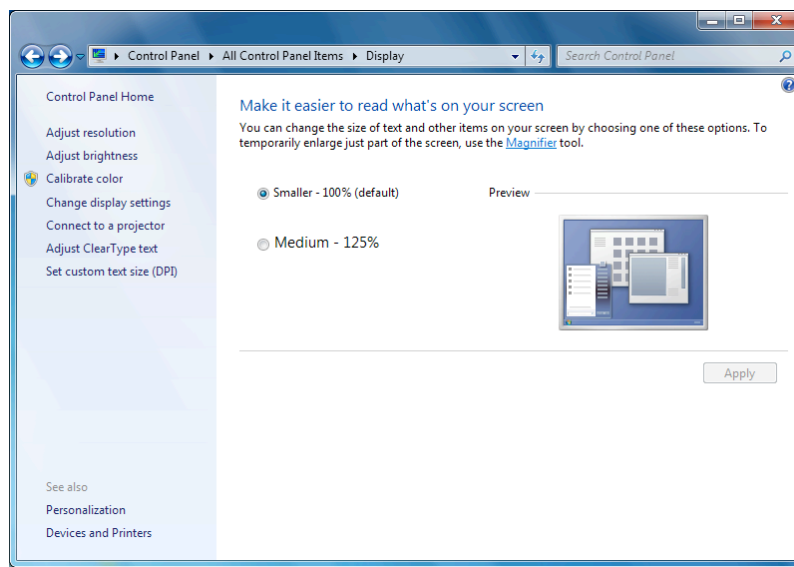
Display Settings

Sometimes, the computer may not adjust the display settings automatically. In this case, changes can be made manually. To adjust your display settings, first choose **Control Panel** from the **Start** menu. The **Control Panel** window is shown below.



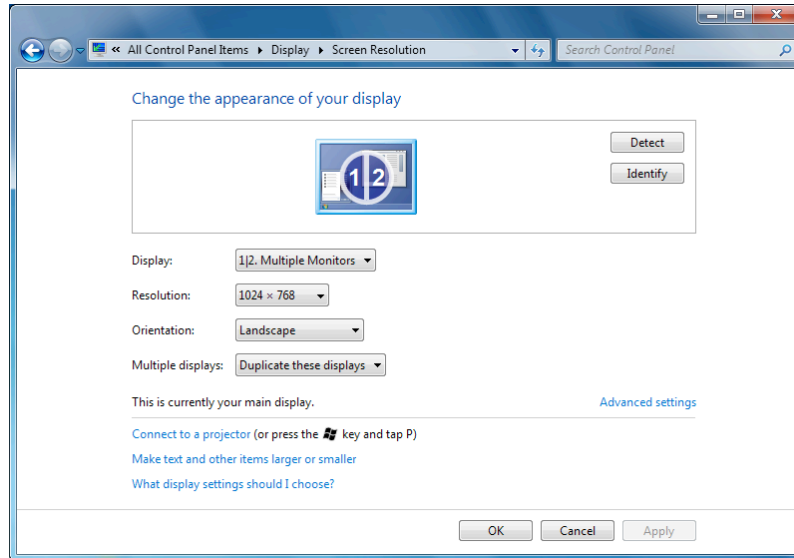
The Control Panels contain many different options for your computer. Click the desired icon to see the available options. Some Control Panels require administrative access to make changes. The **Display** Control Panel icon is in the fifth position in the first column in the example above.

The **Display** control panel is shown below.



Different options for working with your computer's display are listed on the left. Click an option to select it.

The **Display** control panel is shown below, with **Adjust Resolution** selected.



If your computer is connected to an external display, but is not showing an image on it, first check that the connections are tight, and that the display power is on. Then click the **Detect** button.

Screen resolution is measured in horizontal and vertical pixels. Different displays are selected using a pop-up menu in the middle of the window. The available resolutions for the selected display are shown as a pop-up menu, with the currently selected resolution listed numerically.

The Multiple displays mode is also shown as a pop-up menu. Select Duplicate or Extend to meet your needs. Remember that you cannot set the resolution of each display separately when mirroring (Duplicate) is turned on. In that case, the lowest resolution device takes precedence. In the example above, the computer is connected to an external monitor, with display duplication enabled.

Click the **Apply** button to update the screen to match your selection. The best resolution for the built in display is the highest one available (at the top of the pop-up), which is 1280 x 800. When connected to a projector, a lower resolution (1024 x 768) often must be used.

When you have selected your desired settings, click the **OK** button.