

Using your MacBook Pro with the UMass Dartmouth Wireless Network


The MacBook Pro computers provided through the Faculty Instructional Laptop Program have already been configured to use the UMD Wireless network. Faculty members need only to setup a VPN account and password, then enter this information into the MacBook Pro settings. This process is described below.

A. Create a VPN Account

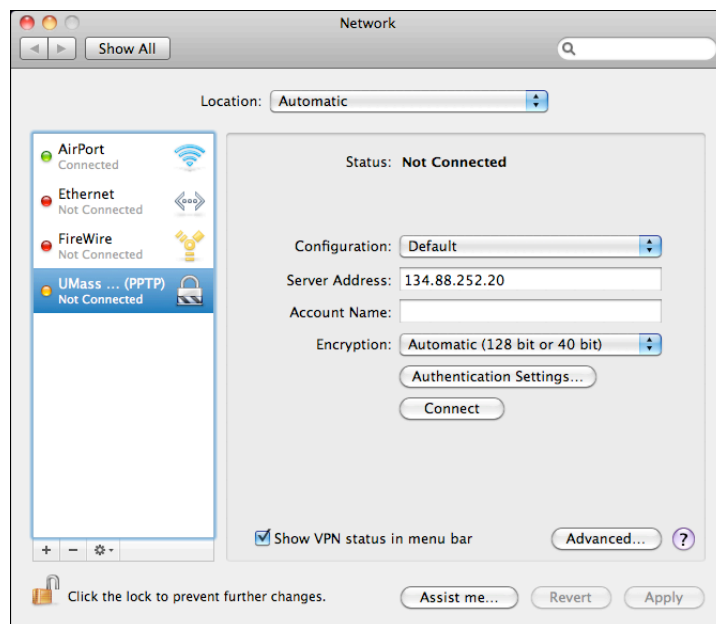
(If you have not already done so, or don't remember your VPN password)

- On a computer with an internet connection, open a web browser, and go to <https://email.umassd.edu/password/>
- Fill in your UMD E-mail username into the field provided, and click **Continue to the Next Step**.
- Click to select 'I wish to change or set my VPN/Wireless password', then click **Continue to the Next Step**.
- Type your email password into the field provided. Then choose a VPN password, and enter it into the VPN Password and Verify Password fields. Note that this password is *case sensitive*, and must consist of *alpha-numeric* characters only. Also, for security reasons, this password must not be the same as your E-mail password.
- Click **Set VPN Password**.
- After the password is successfully set, wait five minutes, then proceed with part B.

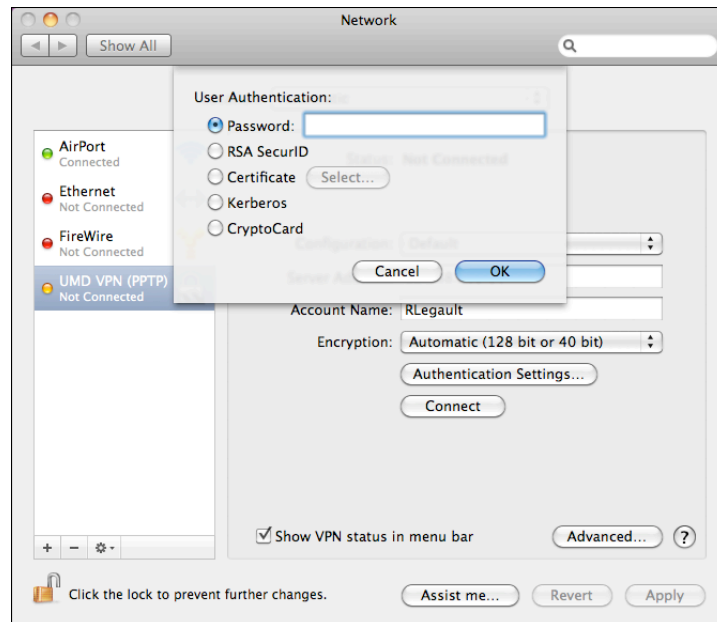
B. Configure VPN on the MacBook Pro

Be sure to follow the steps in this section from a place on campus with a strong Wireless signal. To gauge the signal, check the Airport status menu in the upper right corner of the MacBook Pro screen, as shown here:  More dark bars indicate a stronger signal.

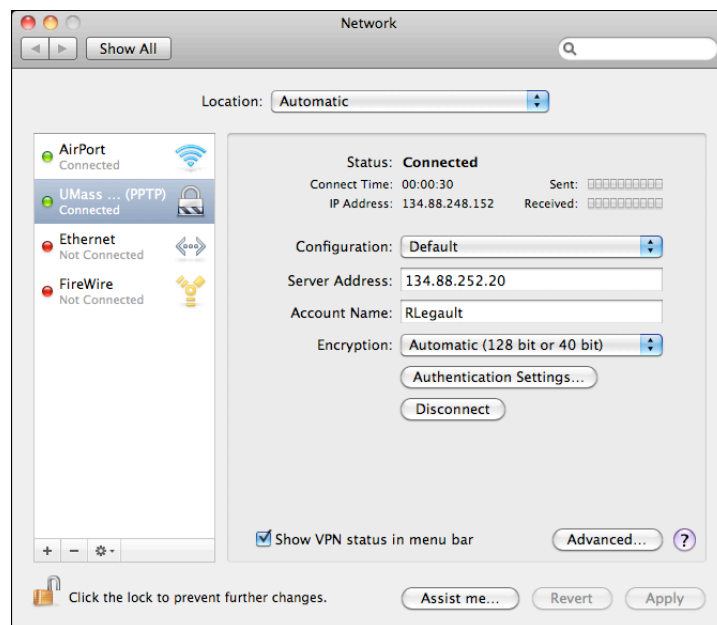
- From the VPN menu,  choose **Open Network Preferences**. The Network window is displayed, as shown below.



- If the VPN area is not displayed, click the **UMass ... (PPTP)** icon on the left side.
- Enter your VPN Username into the Account Name field.
- Click **Authentication Settings**. The User Authentication sheet is displayed, as shown below.



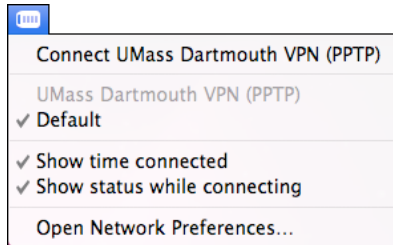
- Enter your VPN password into the Password field, then click **OK**.
- Click **Connect**.
- The VPN Window changes to reflect the connection status, as shown below.



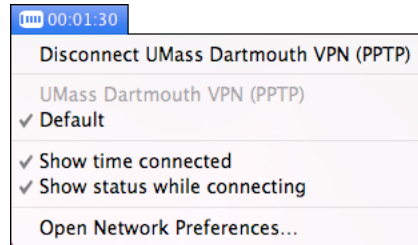
- When you are finished using the Wireless network, click **Disconnect**.
- Click the red Close button in the upper left corner of the Network window.
- When the System Preferences asks if you want to save the configuration changes, click **Apply**.

C. Future Wireless Sessions

After setting up the account information, it is not necessary to open the Network system preferences to establish a Wireless connection. Instead, use the VPN menu, as shown below.



VPN Menu when Idle



VPN Menu When Connected

The VPN menu is shown above on the left when a connection has not been established. Choose **Connect** to start the VPN connection.

The VPN menu is shown above on the right when a connection is active. The time the computer has been connected is indicated in the menu bar. Choose **Disconnect** to end the VPN connection.

Note that a connection to the UMD VPN server is *required* for full-service access to Peoplesoft systems from off-campus, including COIN. COIN self-service (for students) does not require VPN.

