

Using your Lenovo T410 with the UMass Dartmouth Wireless Network

The Lenovo Notebook computers provided through the Faculty Instructional Laptop Program have already been configured to use the UMD Wireless network. Faculty members need only to setup a VPN account and password, then enter this information into the VPN settings on their computer. This process is described below.

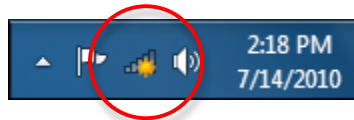
A. Create a VPN Account

(If you have not already done so, or don't remember your VPN password)

- On a computer with an internet connection, open a web browser, and go to <https://email.umassd.edu/password/>
- Fill in your UMD E-mail username into the field provided, and click **Continue to the Next Step**.
- Click to select 'I wish to change or set my VPN/Wireless password', then click **Continue to the Next Step**.
- Type your email password into the field provided. Then choose a VPN password, and enter it into the VPN Password and Verify Password fields. Note that this password is *case sensitive*, and must consist of *alpha-numeric* characters only. Also, for security reasons, this password must not be the same as your E-mail password.
- Click **Set VPN Password**.
- After the password is successfully set, wait five minutes, then proceed with part B.

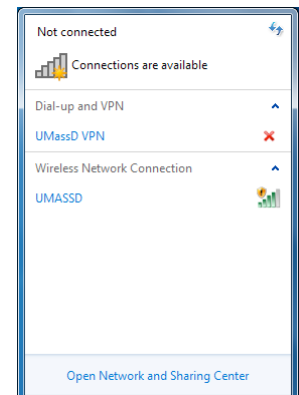
B. Configure VPN on the Lenovo T410

Be sure to follow the steps in this section from a place on campus with a strong Wireless signal. The Wireless network is generally **not** available in Faculty and Staff offices. To gauge the signal, check the Wireless status in the System tray. This is located in the lower right corner of the screen, as shown here:



- Click on the bar chart icon to display the wireless signal strength. The wireless menu is displayed, as shown here.

The UMass Dartmouth wireless network is listed as UMASSD, and green bars indicate the signal strength.

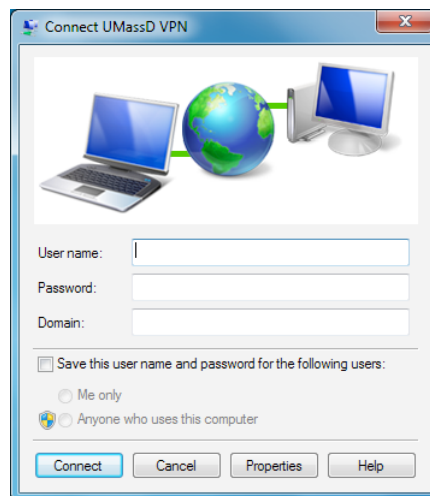


- Click UMassD to activate the wireless network. The wireless menu changes, as shown here.
- Click to select the Connect automatically checkbox.
- Click **Connect** to make the connection.

Your computer remembers the UMass Dartmouth network, and you should not need to repeat these steps.

Next you must establish a VPN connection. Click to activate the wireless menu again.

- Click UMassD VPN. The wireless menu appears as shown here.
- Click **Connect**. The Connect UMassD VPN dialog box is displayed, as shown below.



- Enter your VPN Username and Password into the fields provided.
- Click the Save checkbox if you want your computer to remember your information. Make sure that the 'Me only' radio button is selected if you choose to save your password.
- Click **Connect**. A dialog box is displayed as the username and password are verified.

The Connect dialog box closes, then the wireless connection becomes active. The wireless menu with active VPN connection is shown here.

- When you are finished using the Wireless network, open the wireless menu, click UMassD VPN, and click **Disconnect**.

Note that a connection to the UMD VPN server is *required* for full-service access to Peoplesoft systems from off-campus, including COIN. COIN self-service (for students) does not require VPN.

