



Set Up Microsoft Remote Desktop on MacOS

You may wish to use accessories such as a drawing tablet or external USB storage when using Corsair Desktop. Unfortunately these devices are not supported by a web browser connection. You can set up remote desktop protocol (RDP) client software to overcome this limitation.

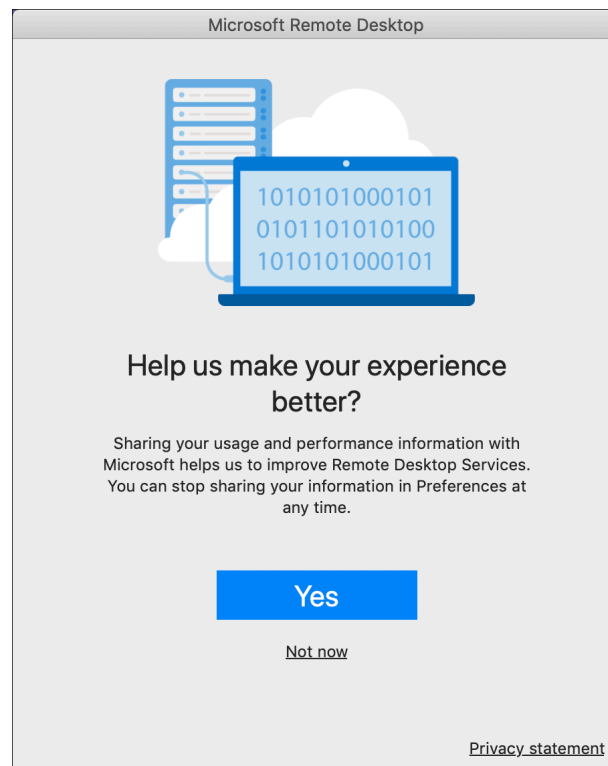
This document explains how to use the Microsoft Remote Desktop application to access Corsair Desktop for CVPA. The pictures were taken using MacOS 10.14 and Firefox 70. Your computer may appear differently.

Make sure that you have a stable internet connection before you use Remote Desktop. If you have questions or need help with this procedure, please use our online help form at <https://ithelp.umassd.edu> or call 508-999-8900, and select option 5.

1. Open a Finder window, then select Applications in the sidebar on the left. Double click to open Microsoft Remote Desktop.



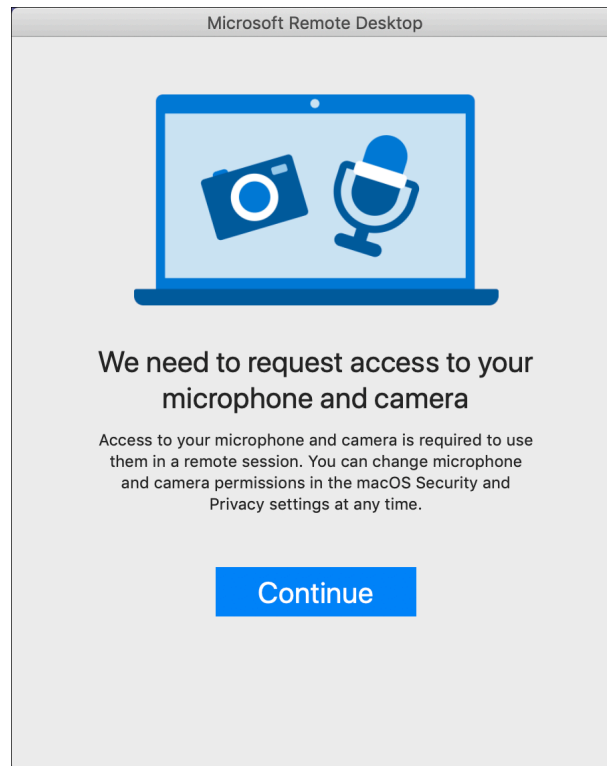
2. The Microsoft Remote Desktop application opens.



Click the **Not now** link to continue.

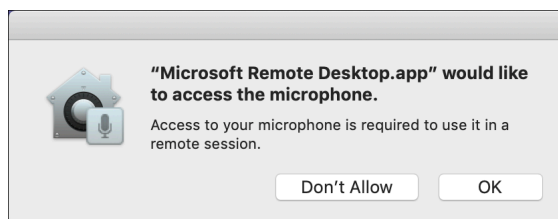


3. The application requests access to your computer's camera and microphone.



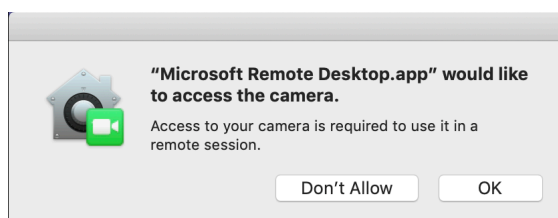
Click the **Continue** button.

4. A dialog box opens asking you to grant access to the microphone.



If you are certain you will be using the microphone with Corsair Desktop applications, click **OK**, otherwise, click the **Don't Allow** button.

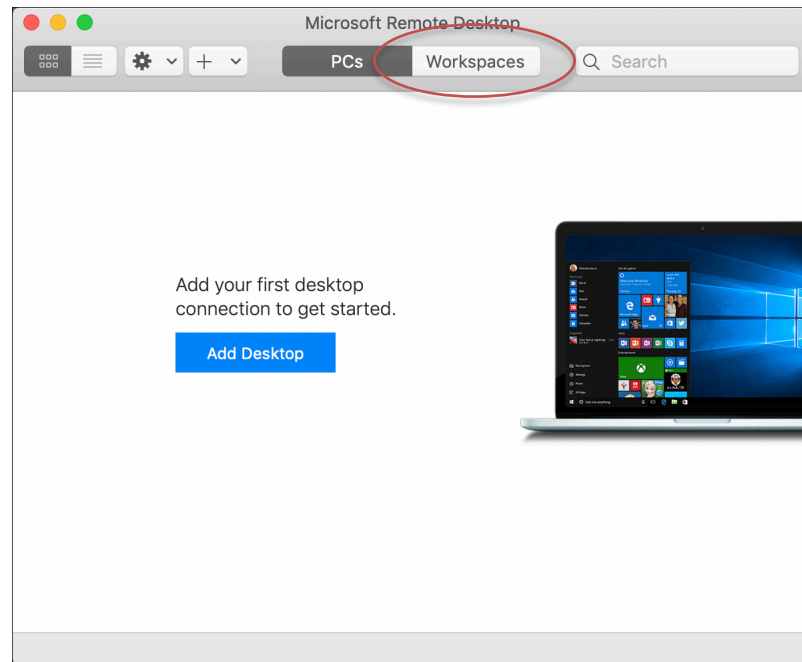
5. A dialog box opens asking you to grant access to the camera.



If you are certain you will be using the camera with Corsair Desktop applications, click **OK**, otherwise, click the **Don't Allow** button.

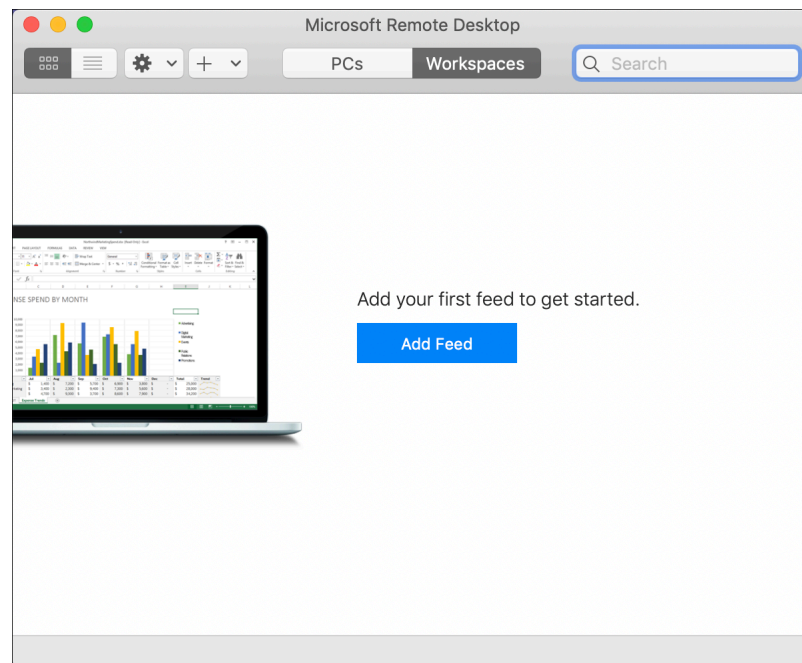


6. The Microsoft Remote Desktop window is displayed with the PCs tab selected.



Click to activate the **Workspaces** tab at the top.

7. The Workspaces tab is displayed.



Click the **Add Feed** button.



8. The Add Workspace sheet is displayed.

Add Workspace

A workspace is associated with this URL.

Workspace URL:

Links to remote apps, PCs and files will be downloaded and automatically updated if you add the workspace.

Privacy settings for managed resources are preset by your organization. [Learn more](#)

Enter <https://rdweb.wvd.microsoft.com/api/arm/feeddiscovery> into the field provided. The sheet expands to show the Workspace URL.

9. Click the **Add** button to continue.
10. The Microsoft Sign in dialog box is displayed.

Microsoft

Sign in

[Can't access your account?](#)

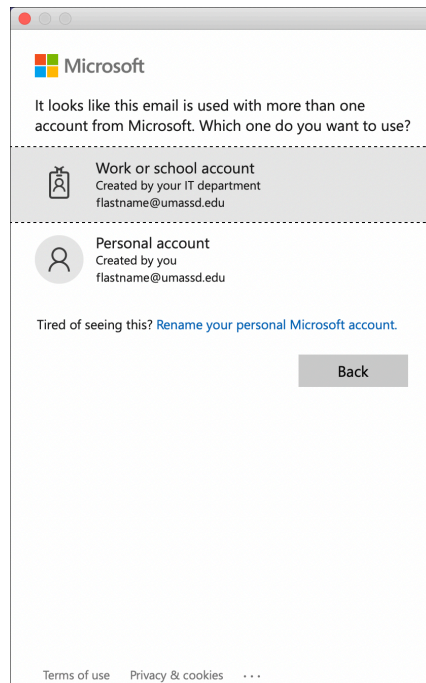
[Sign-in options](#)

[Terms of use](#) [Privacy & cookies](#) ...

Enter your UMass Dartmouth email address into the field provided, then click the **Next** button.

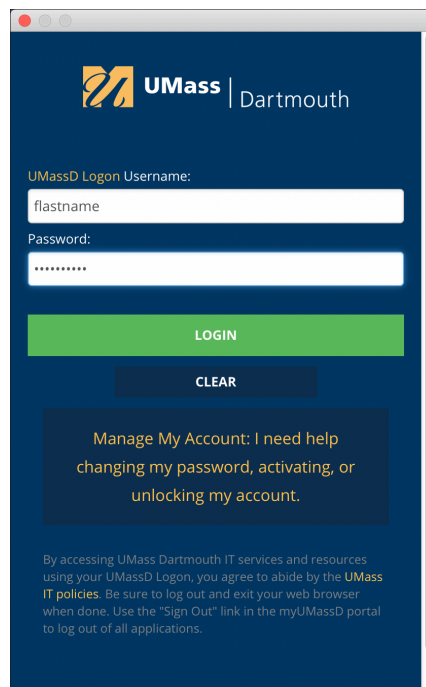


11. A dialog box asks you to choose the account type.



Click to select **Work or school account**.

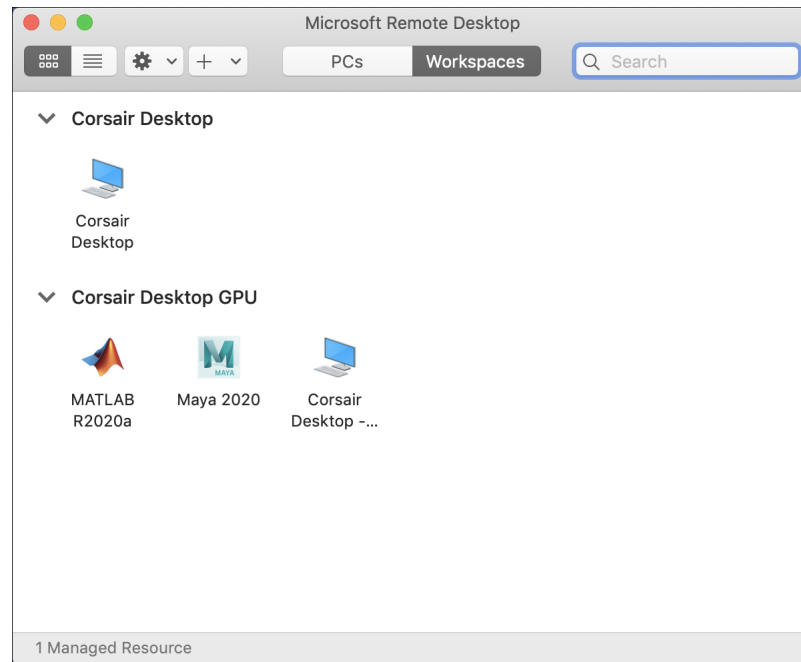
12. The UMass Dartmouth logon page is displayed.



Enter your UMassD Logon username and password into the fields provided, then click the **Login** button.



13. The CVPA Corsair Desktop virtual computer is added to your Workspaces.



Double-click the **Corsair Desktop** icon, or one of the application-specific icons to connect.

Enter your UMassD Logon username and password when asked to log in.
Don't forget to Disconnect when you're done!

14. For future Corsair Desktop sessions, double-click to open Microsoft Remote Desktop in your Applications folder. The settings are saved, and you will be able to get started immediately.



Microsoft Remote
Desktop.app