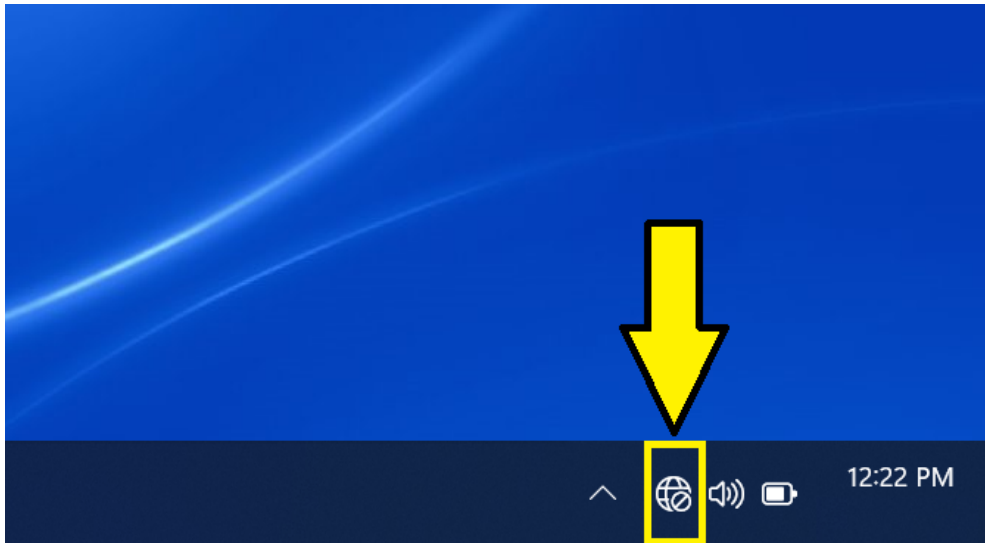


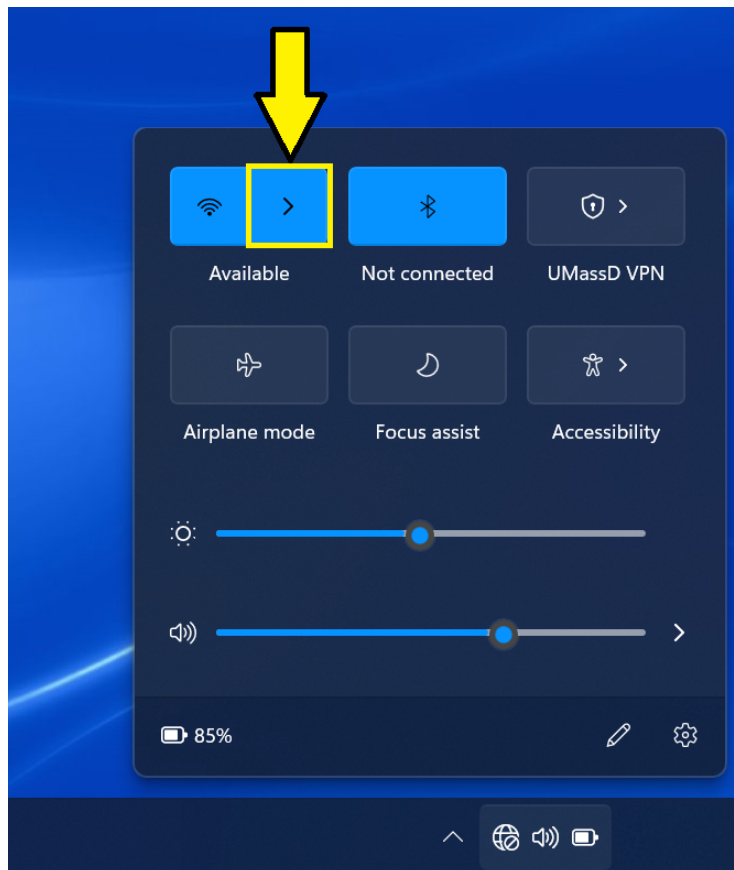


Configuring your Windows 11 computer to use the Eduroam wireless network

1. Click on the network icon on the bottom of left of your taskbar, located near the time/date.

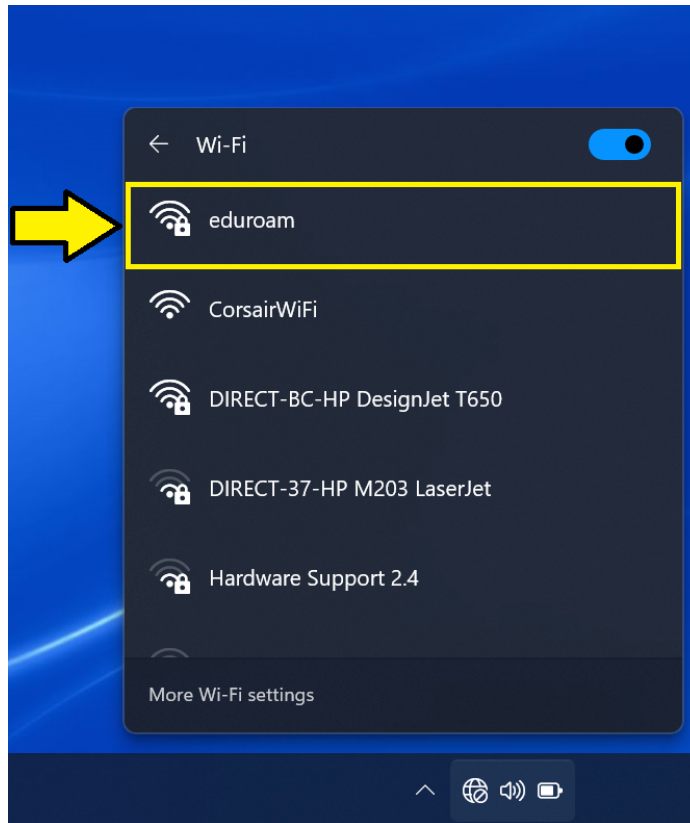


2. Click on the arrow to the right of your wireless button.





3. From the resulting menu, click on “eduroam”



4. Once clicked, click on the “Connect” button that appears





- When prompted, use your full UMassD email and email password as credentials for eduroam.



- Once eduroam is listed as connected, you are now fully connected to the eduroam wi-fi

