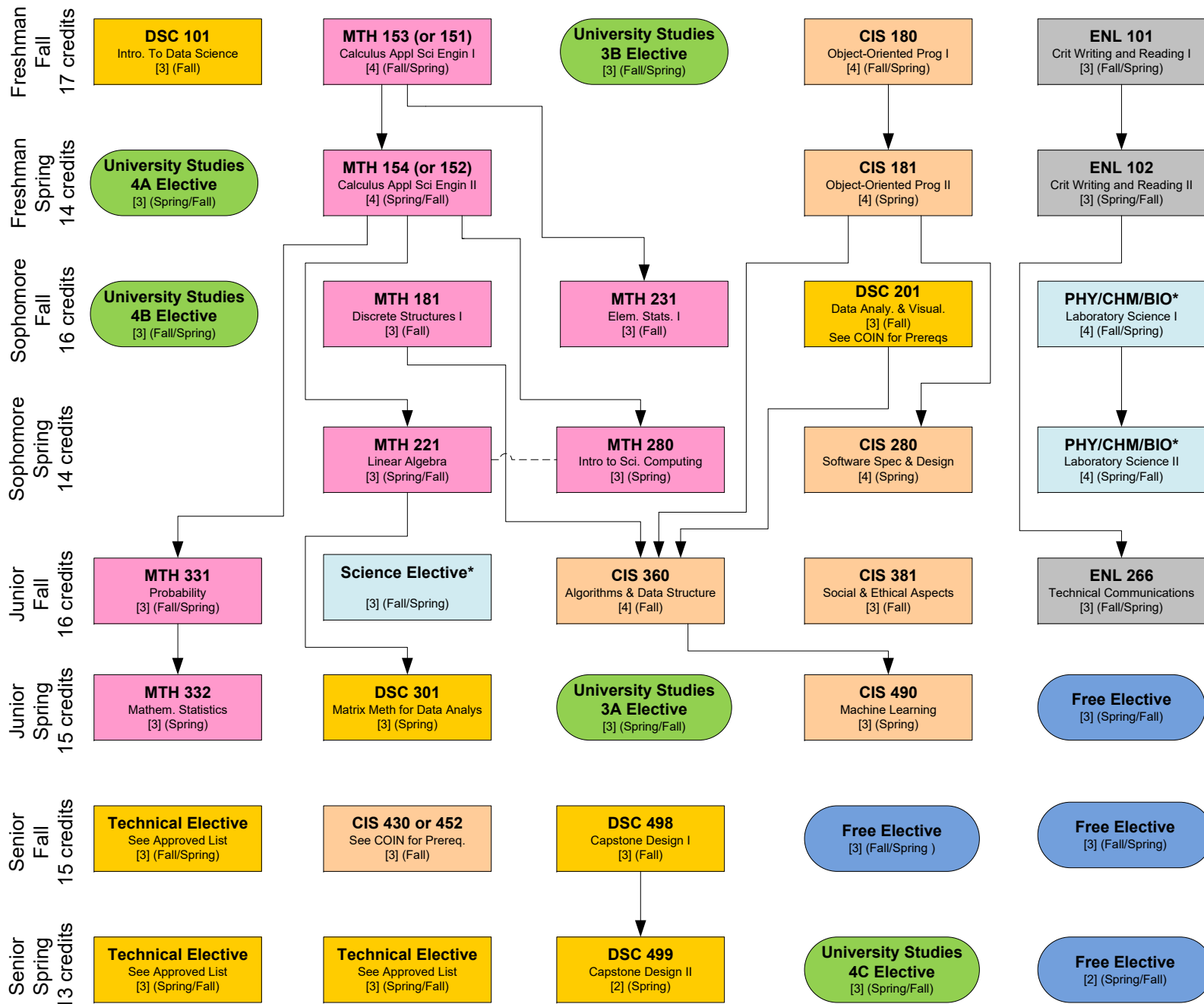


# Data Science Curriculum Flowchart (120 credits)

Catalog Year 2020-21 to present



Note: Any CIS core course or technical elective must be passed with a grade of C or better

All MTH courses must be passed with a grade of C- or better.

\*One of your Laboratory Science or CIS Science Elective courses must also be an approved US 2A course.

The Laboratory Science I/II requirements must be two courses from the same subject to satisfy the requirement. Ex. PHY 113 & PHY 114.