

# Community Economic Development Center

## Office Layout Plan

---

Honors Office Studio Project in Partnership with  
the University of Massachusetts Dartmouth  
Interior Architecture and Design Program



Design Professor and Student

Stephanie McGoldrick

[smcgoldrick1@umassd.edu](mailto:smcgoldrick1@umassd.edu)

Daniela Tishchenko

[dtishchenko@umassd.edu](mailto:dtishchenko@umassd.edu)



Client Representatives

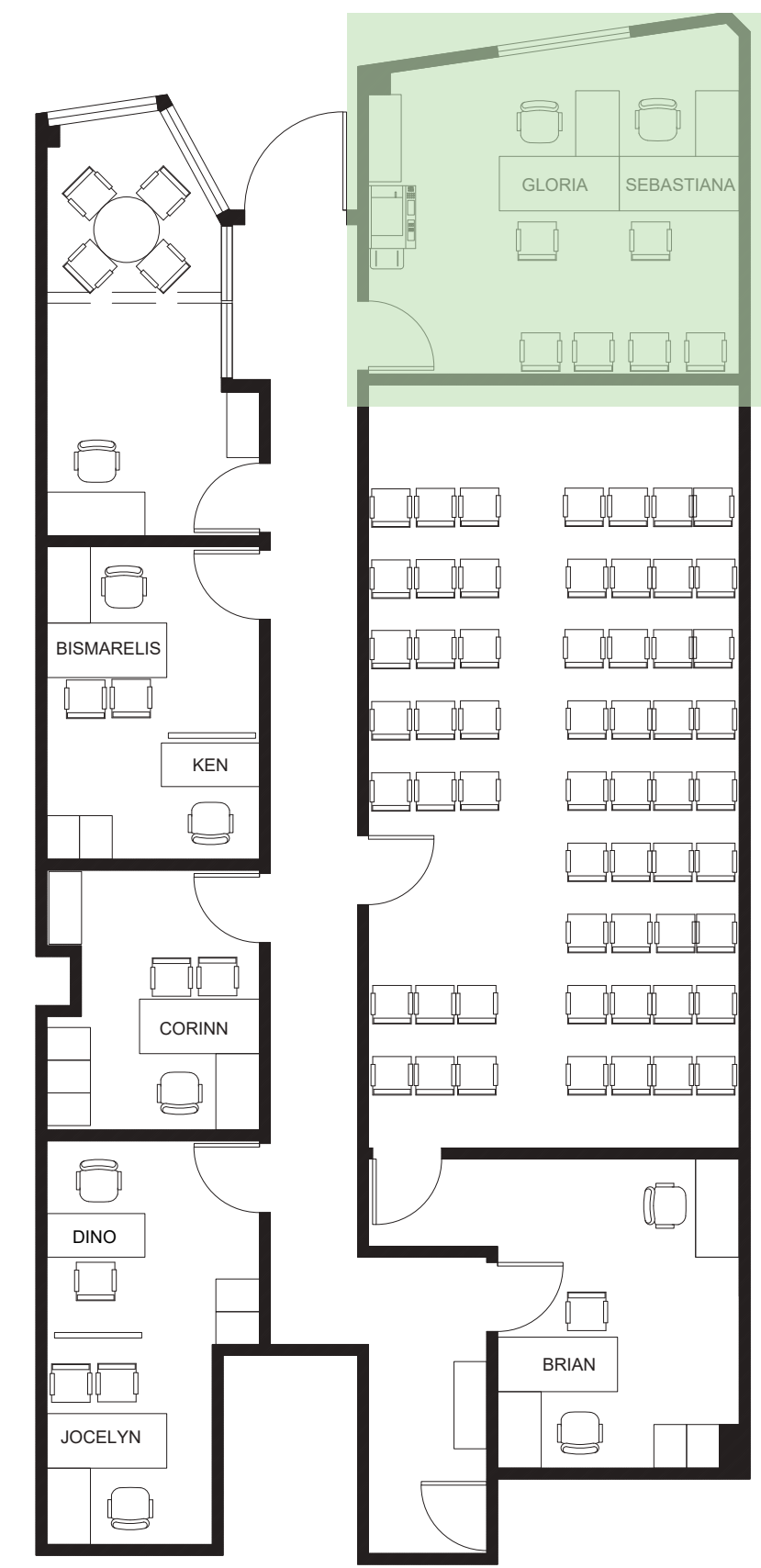
Corinn Williams - Executive Director

[corinncedc@gmail.com](mailto:corinncedc@gmail.com)

Brian Pastori - Deputy Director

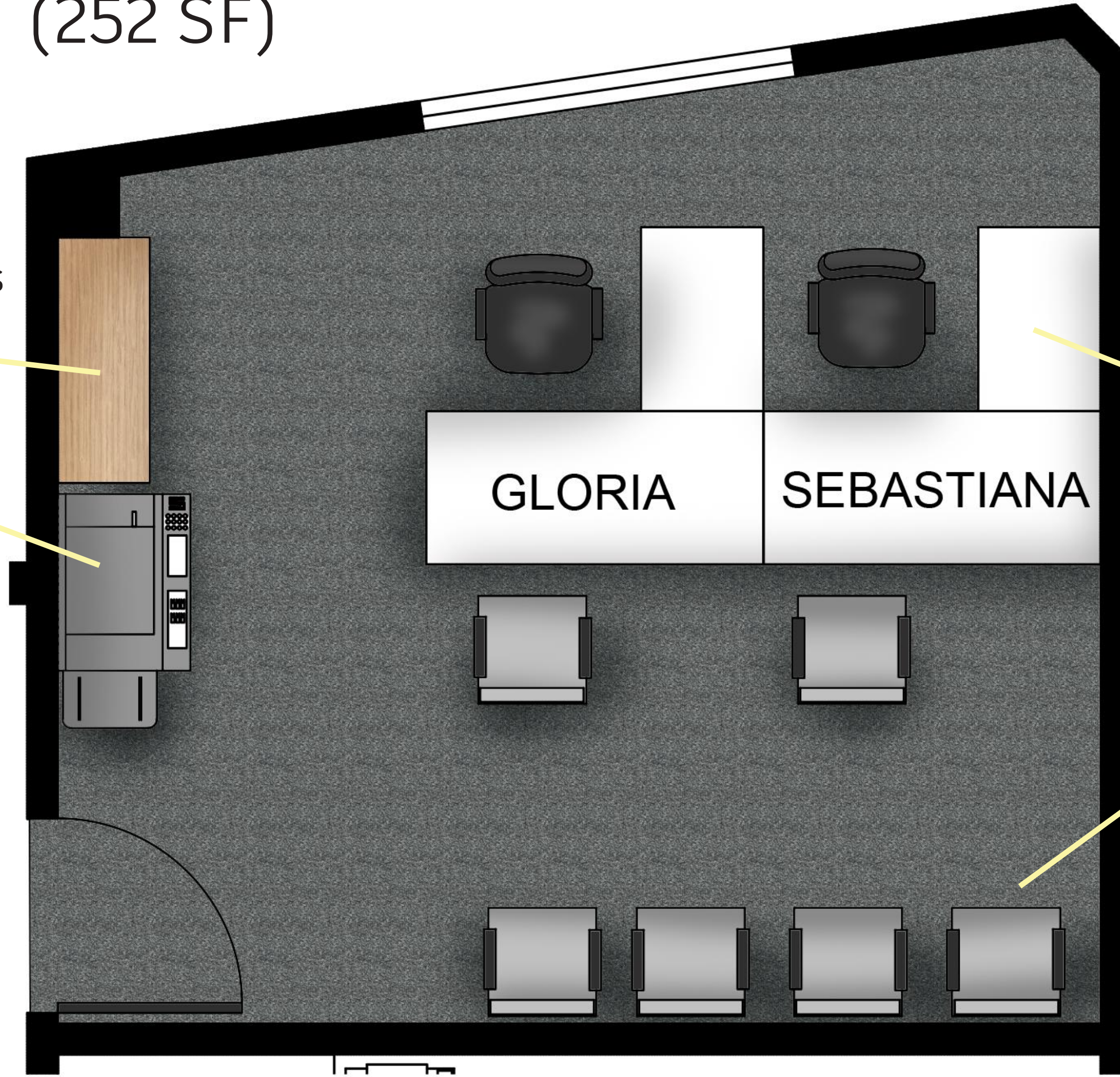
[briancedc@gmail.com](mailto:briancedc@gmail.com)

# Reception (252 SF)



office supplies storage

printer



L-desk (2)  
main: 66x30"  
return: 42x24"

guest chairs (6)

Steelcase  
Amia Chairs  
Conklin

Teknion Amicus  
Guest Chairs  
Conklin

Steelcase File  
Cabinets  
Conklin



Stretch L-Shape Private Offices  
Conklin



art/weavings from  
community

accent wall based  
on Polish flag

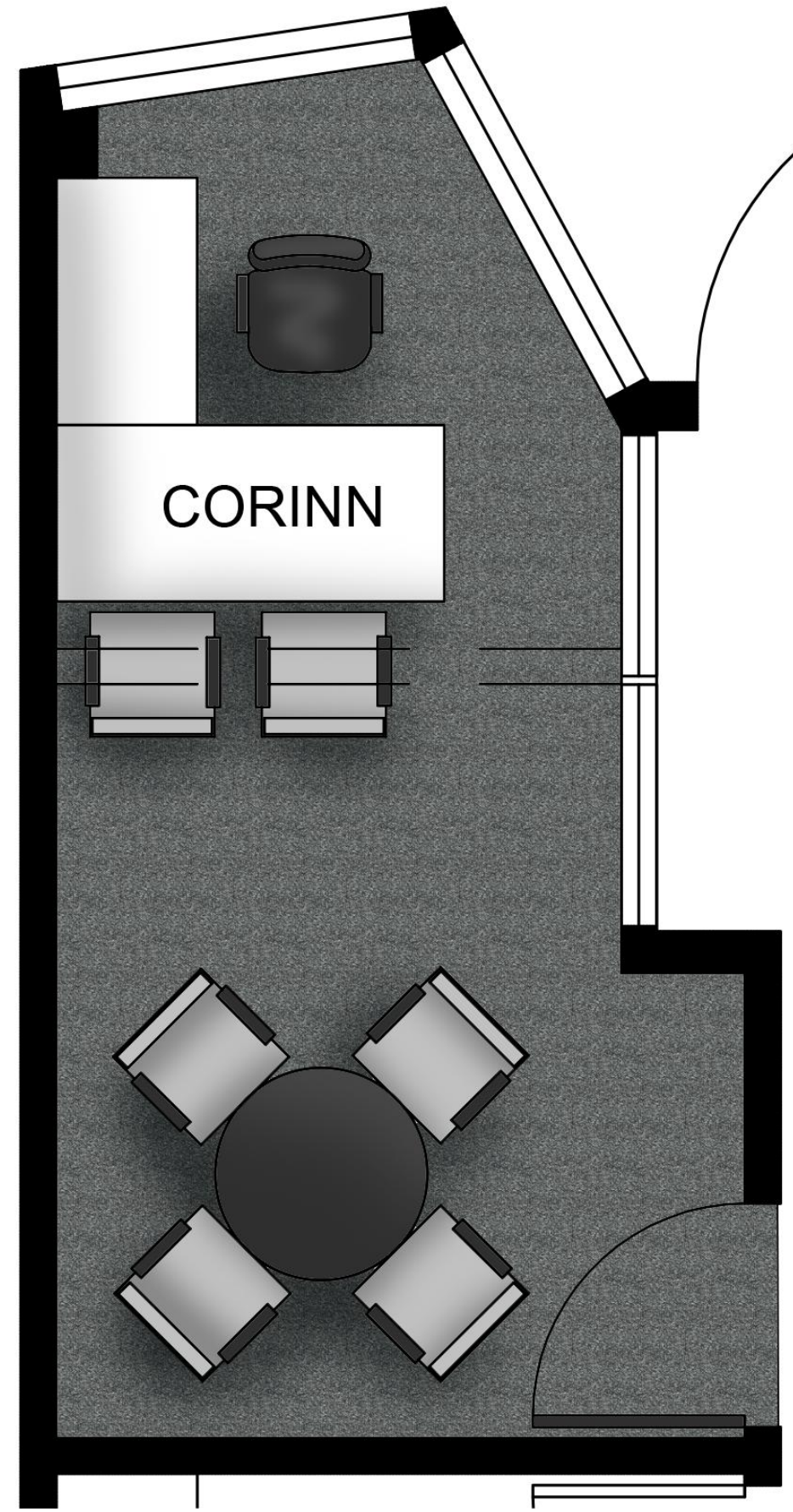
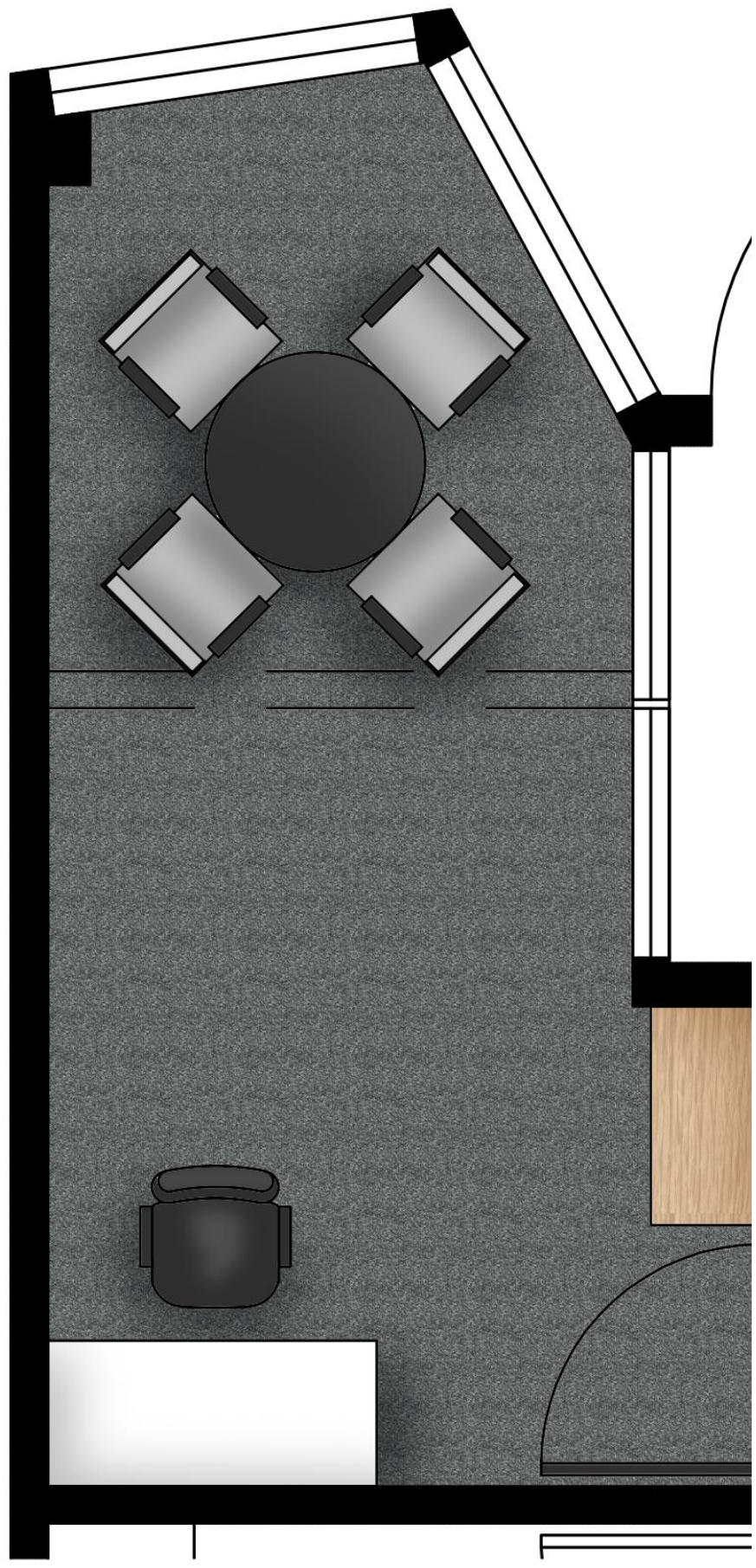
# Meeting Room/Corinn's Office



(157 SF)

option 1

option 2



- Meeting room:
- more available to meetings for everyone
  - file cabinets
  - space for temps
  - empty space

- Corinn's office:
- sunlight!
  - the other room can be a break/coffee room

- Needed:
- 4/6 side chairs
  - 3' diameter table
  - task chair
  - desk/L-desk
  - file cabinet/shelf (30" wide pictured)

Steelcase Amia Chairs Conklin



Teknion Amicus Guest Chairs Conklin



Steelcase File Cabinets Conklin



Stretch L-Shape Private Offices Conklin

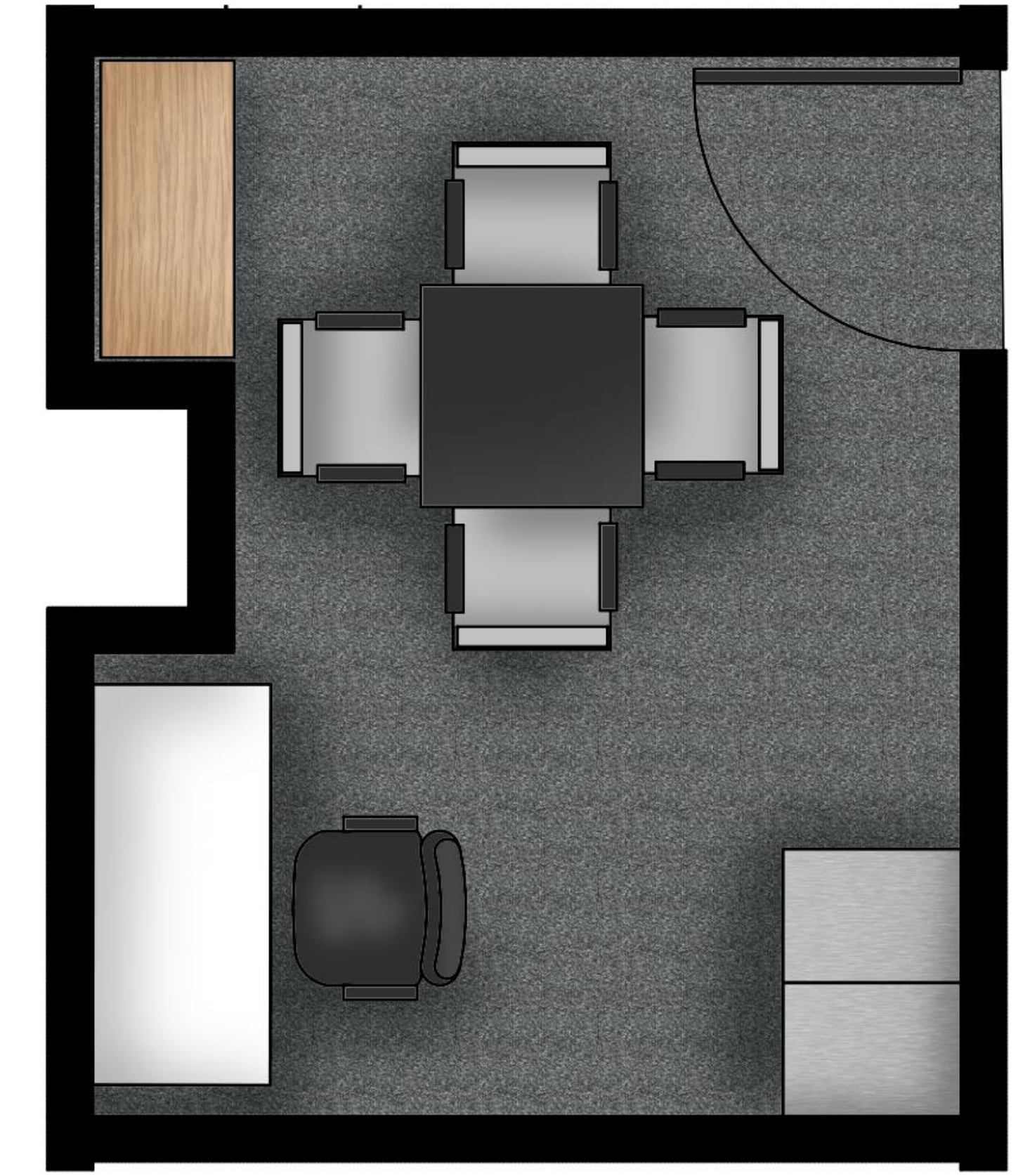
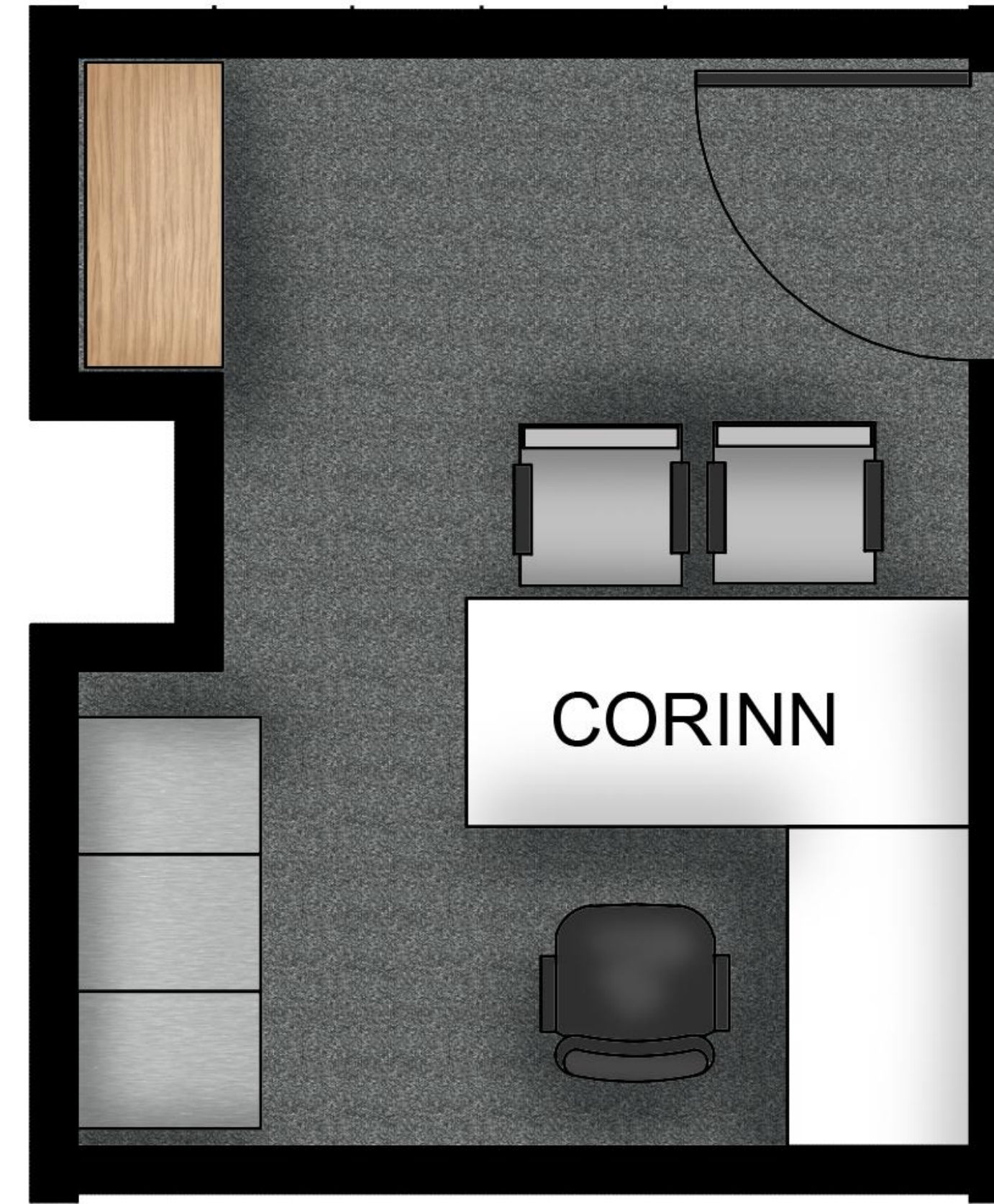
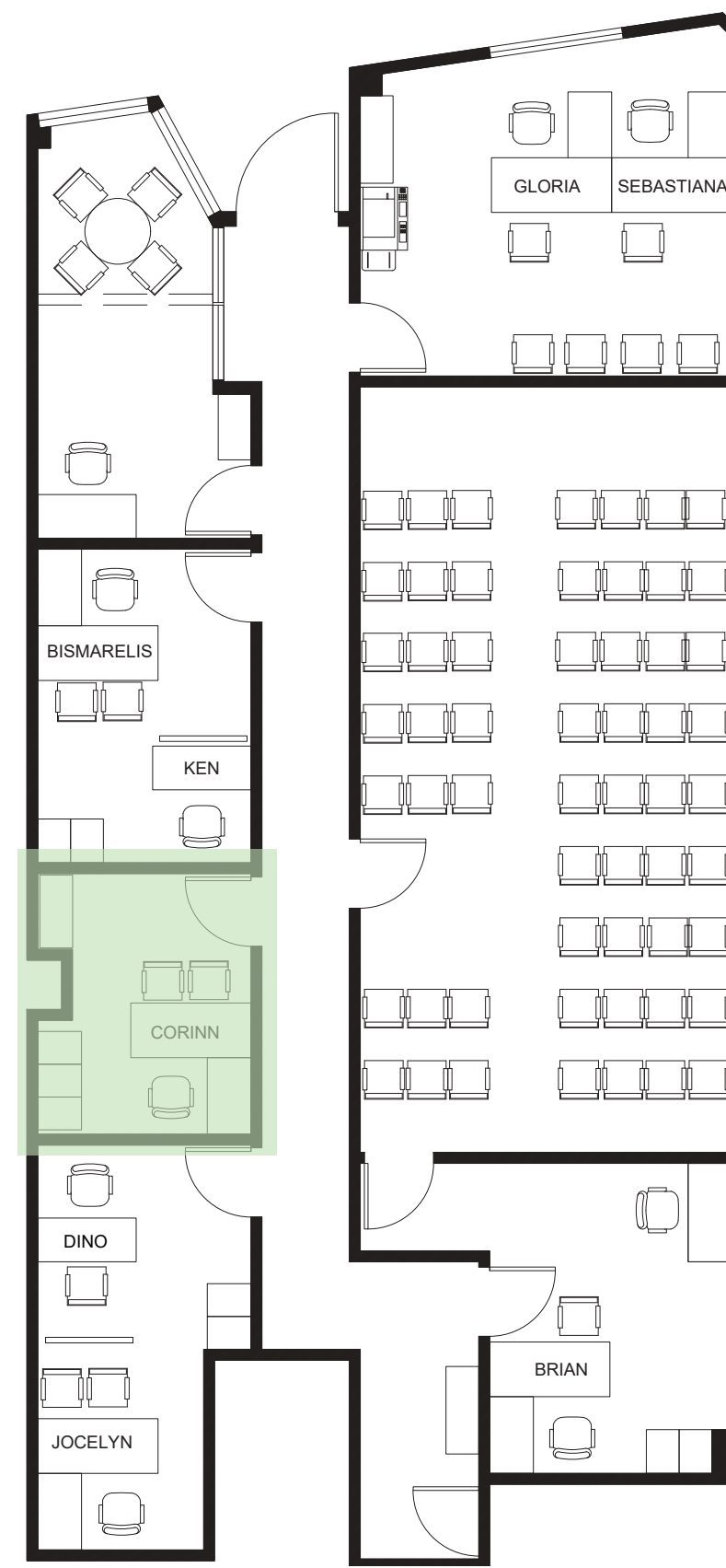


option 1

option 2



# Corinn's Office/Meeting Room (111 SF)



Steelcase  
Amia Chairs  
Conklin



Teknion Amicus  
Guest Chairs  
Conklin



Steelcase File  
Cabinets  
Conklin



- Corinn's Office
- private room
  - chance to leave office to meet with people

- Needed:
- L-desk, chair
  - bookshelf
  - 2 side chairs
  - file cabinets (pictured: 48" wide)



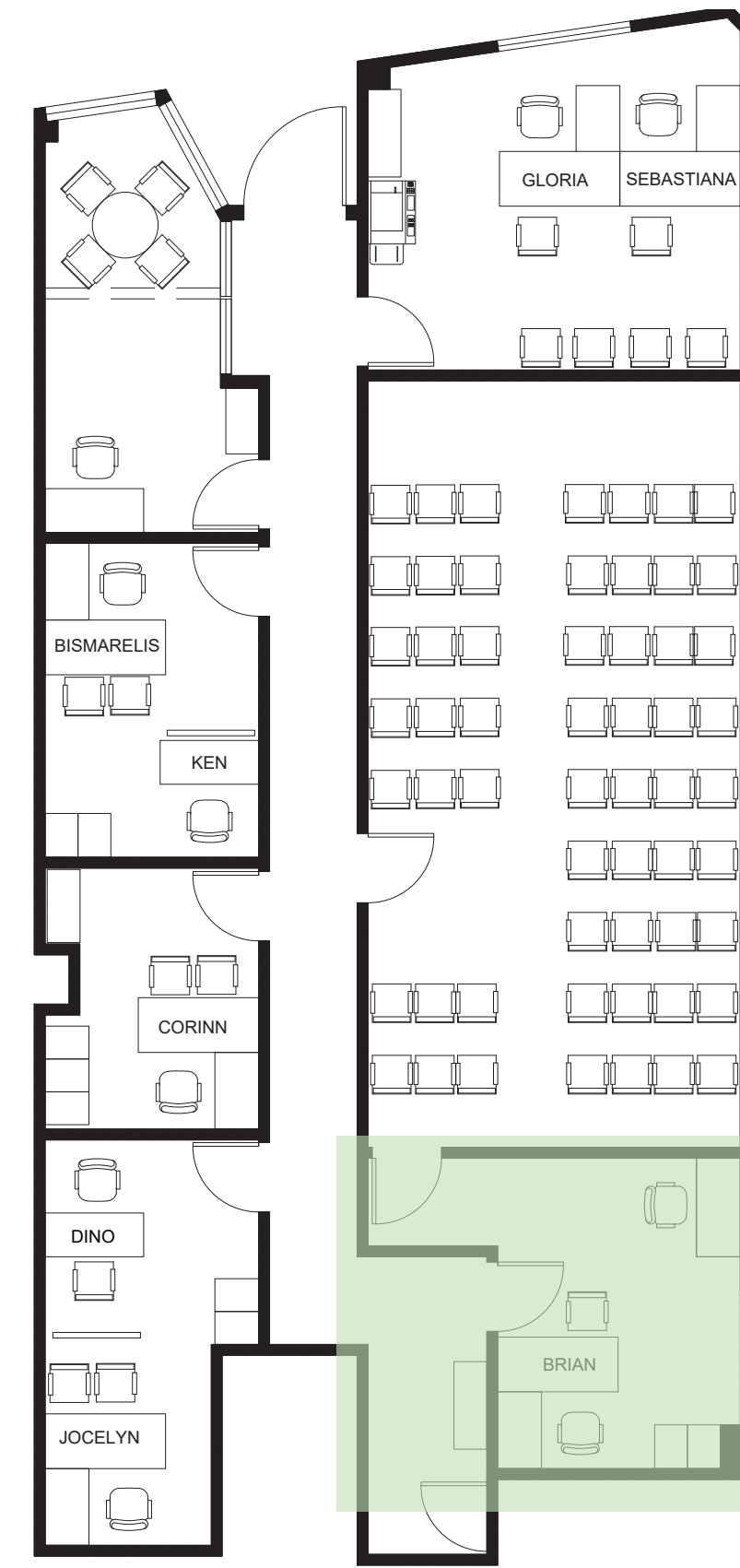
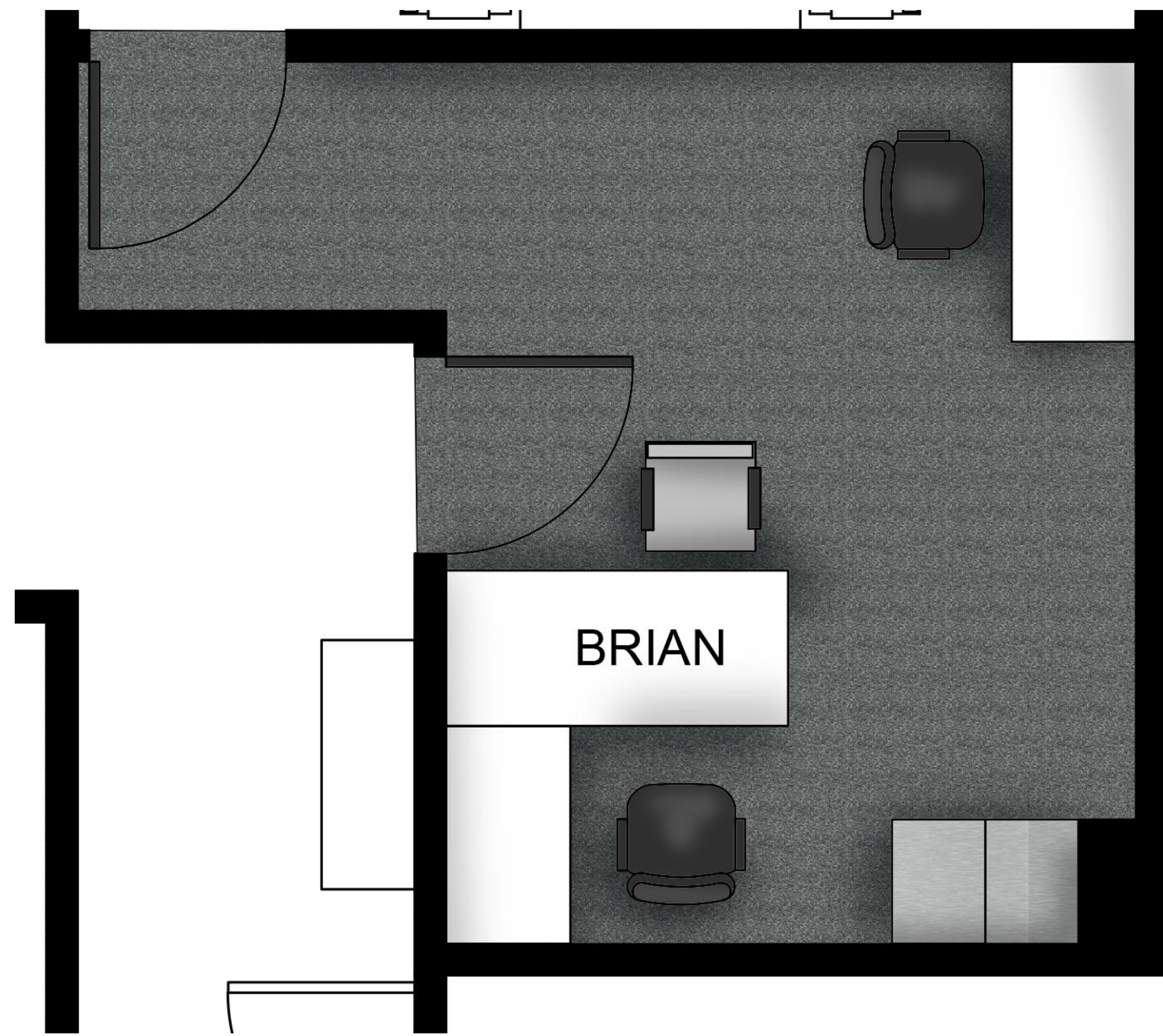
- Meeting room:
- can be coffee/break room
  - temp worker
  - a little tight but can fit

- Needed:
- desk, chair
  - 2'x2' table
  - wall shelf
  - 4 side chairs



Stretch L-Shape Private Offices  
Conklin

# Brian's Office (179 SF)



- Needed
- L-desk (66x30 TFL, 42x24 return)
  - task chair
  - side chair (1)
  - file cabinets (pictured: 30"W)
  - admin desk (54x30")
  - wall shelf (tight but feasible if not main circulation)



shelving (1' depth)

magic eye art!

file cabinets

accent wall based on Guatemalan flag

Steelcase  
Amia Chairs  
Conklin



Teknion Amicus  
Guest Chairs  
Conklin



Steelcase File  
Cabinets  
Conklin



Stretch L-Shape Private Offices  
Conklin

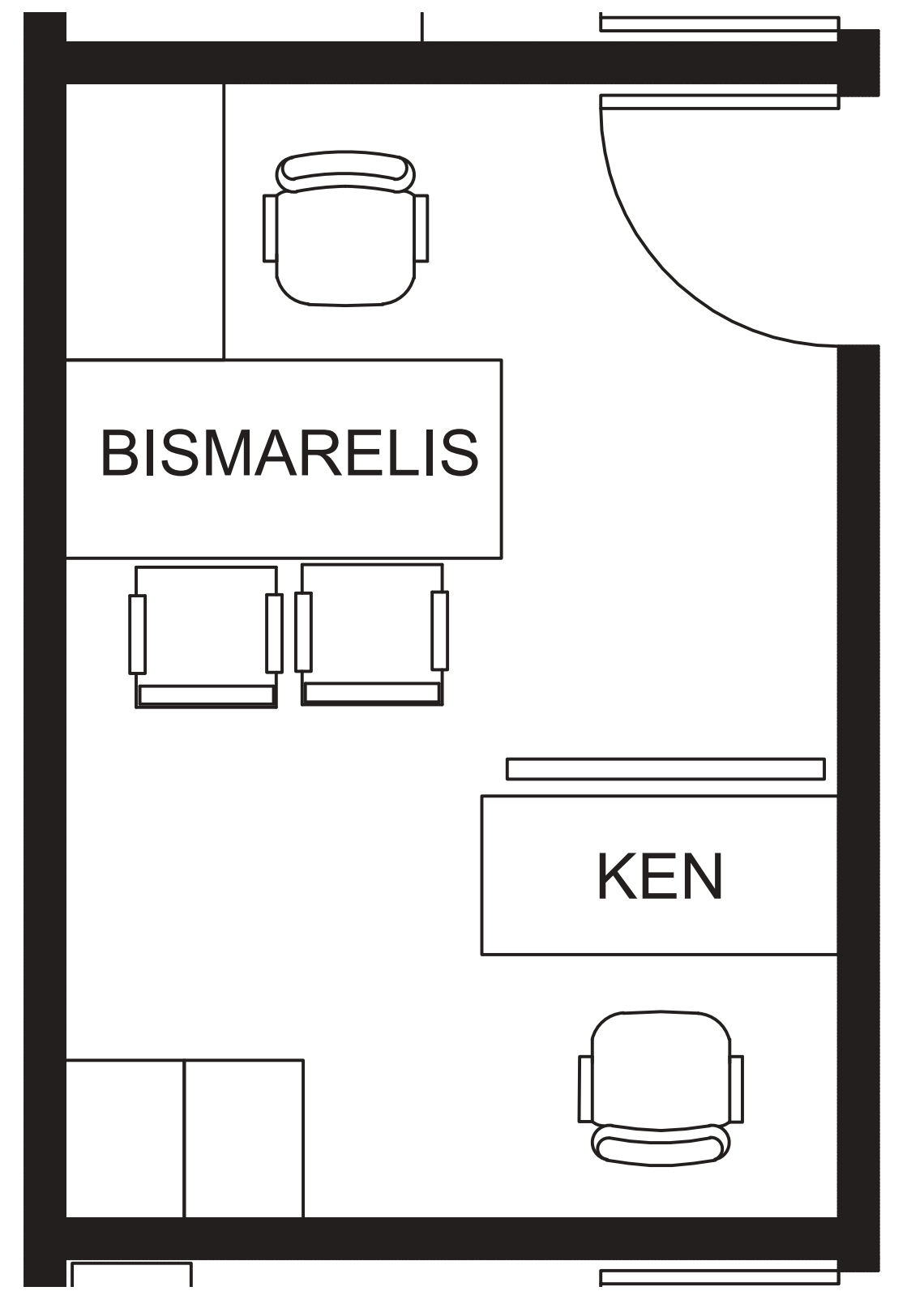
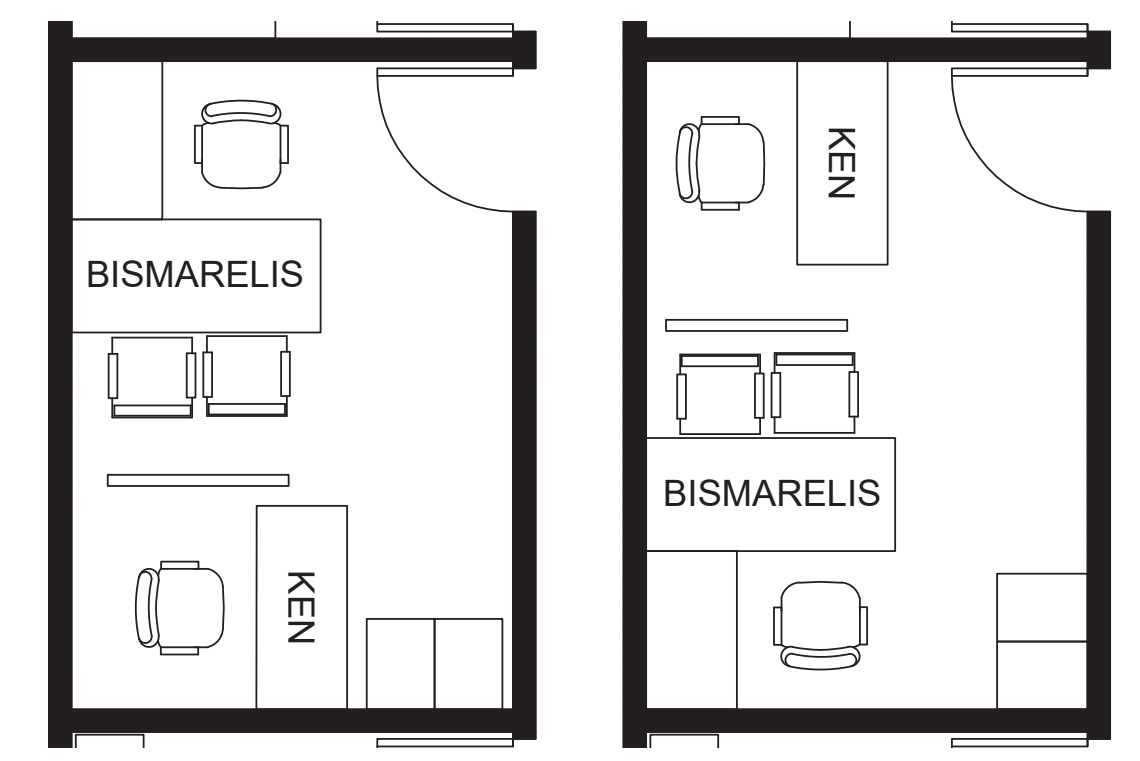
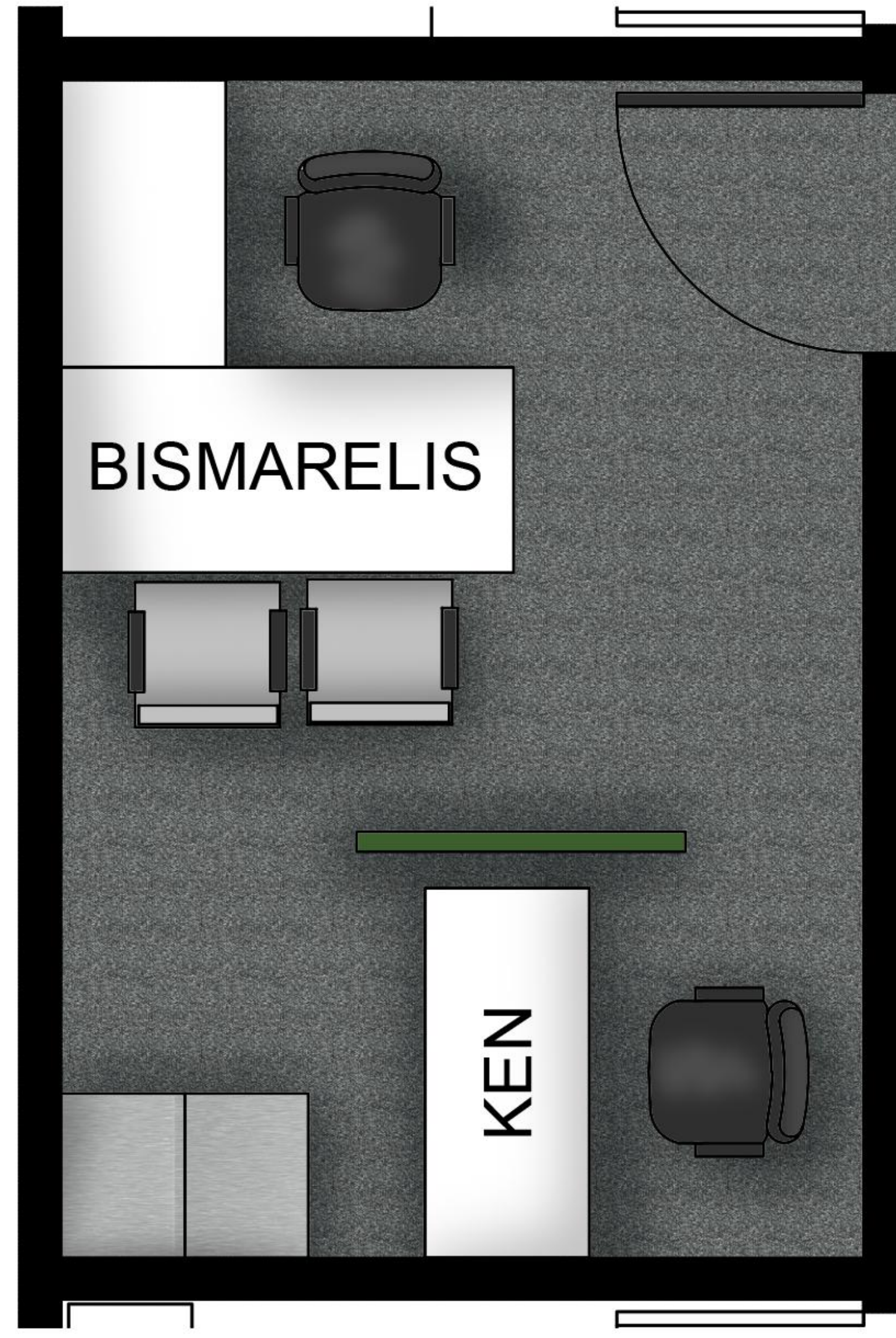
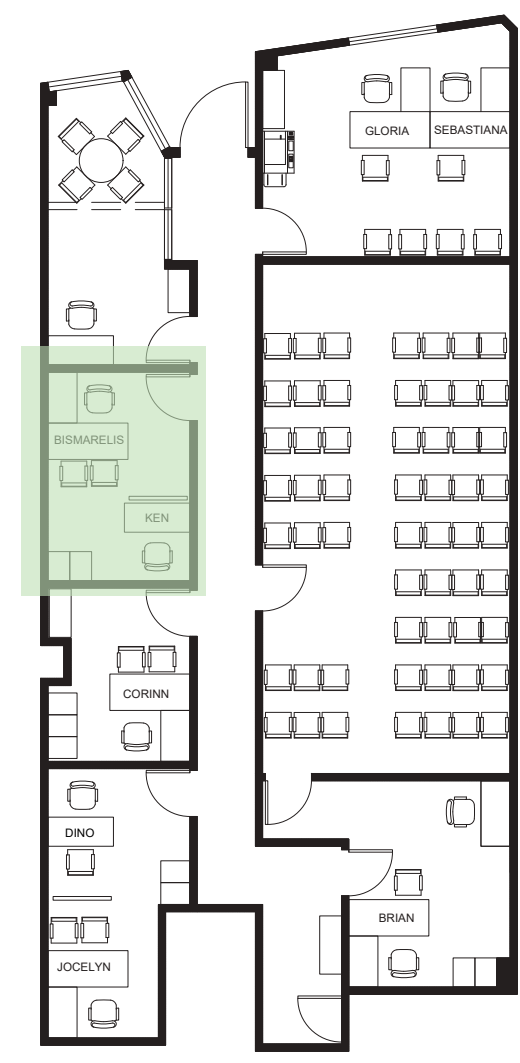


# Office 1: Bismarelis, Ken (140 SF)



- Needed
- L-desk (66x30 TFL, 42x24 return)
  - desk (30W x 54L)
  - task chair (2)
  - side chairs (2)
  - file cabinets (pictured: 30"W)
  - freestanding acoustic panel (for visual and audio privacy)

Steelcase File Cabinets Conklin



Stretch L-Shape Private Offices Conklin



Steelcase Amia Chairs Conklin



Teknion Amicus Guest Chairs Conklin



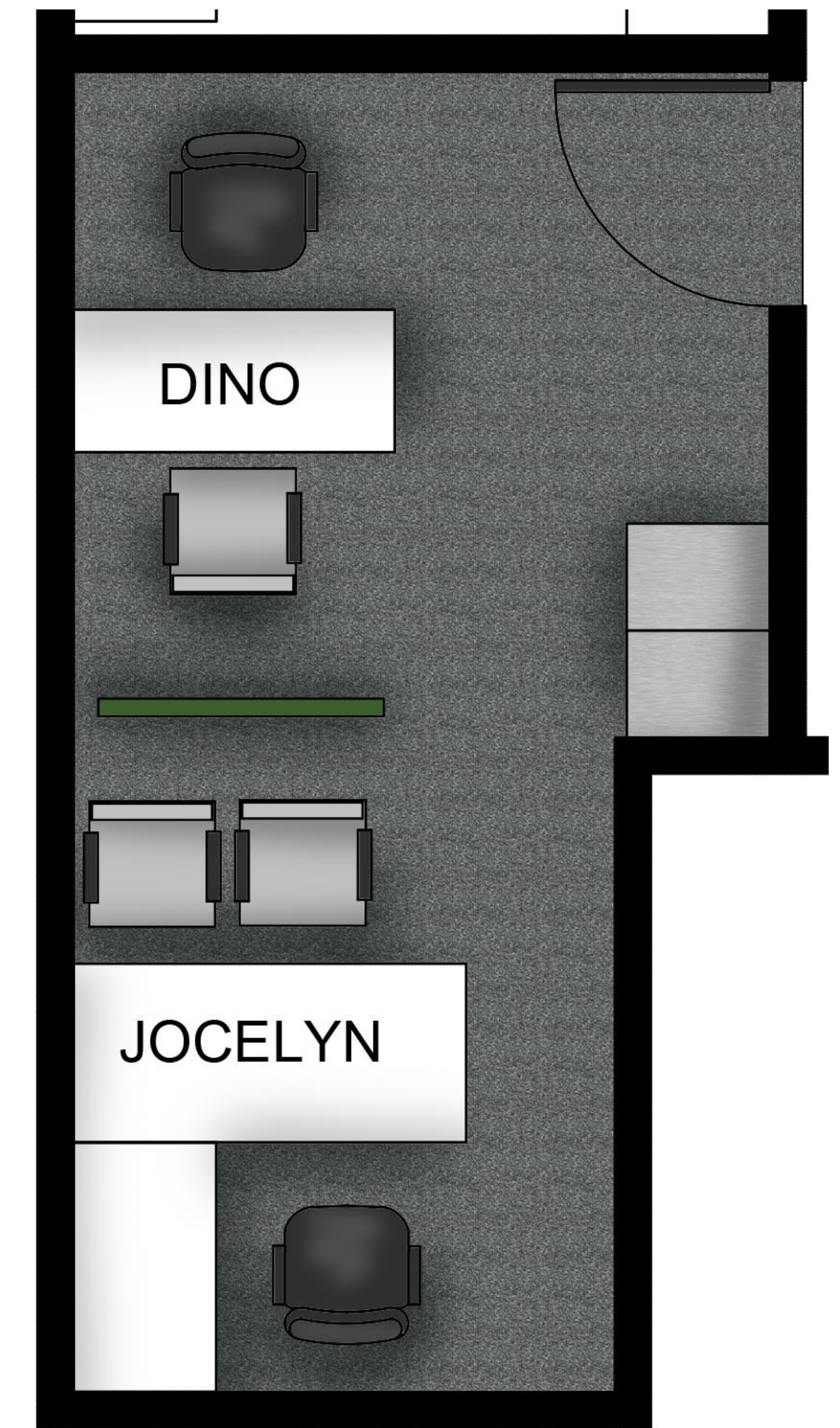
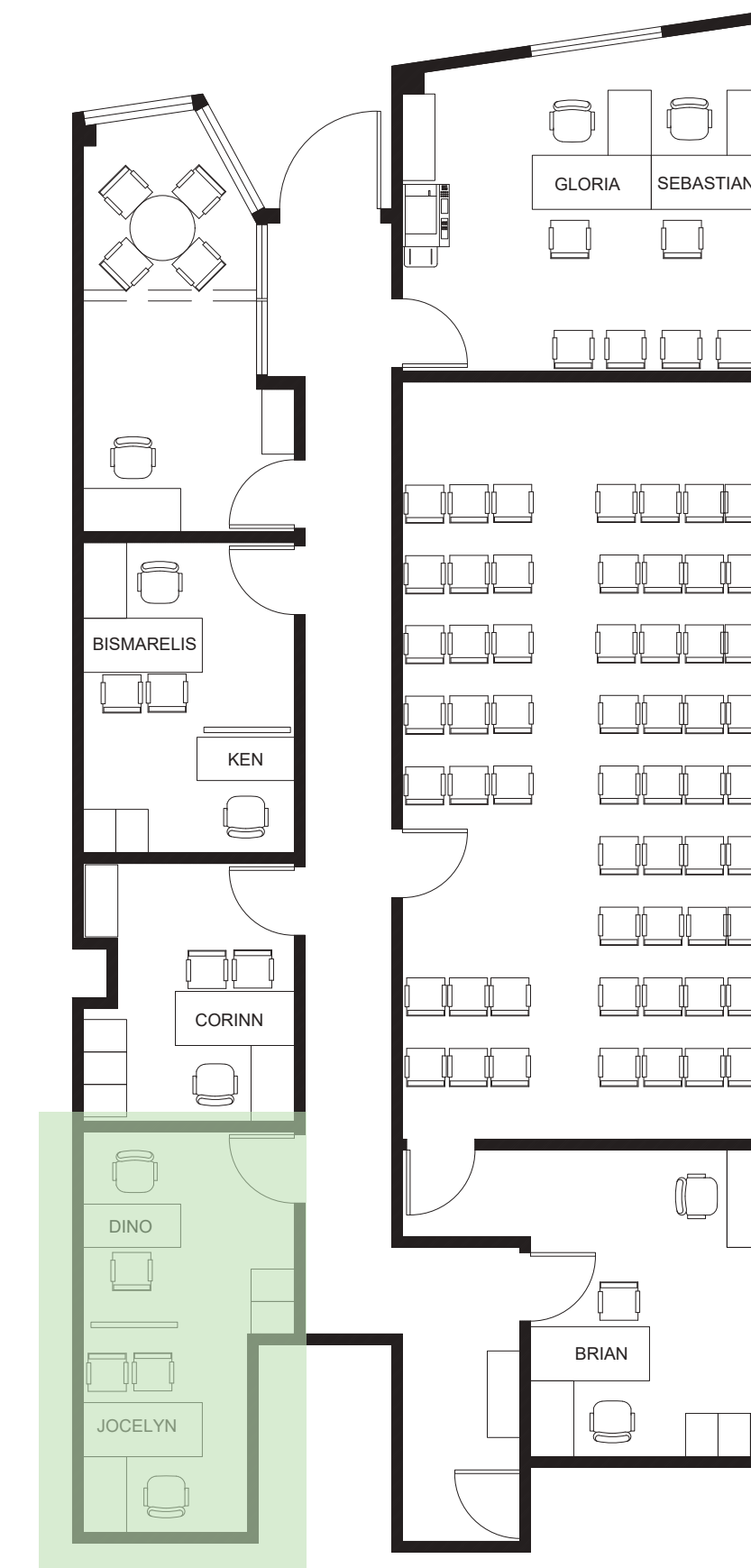
# Office 2: Jocelyn, Dino

(160 SF)



Stretch L-Shape Private Offices  
Conklin

- Needed
- L-desk (66x30 TFL, 42x24 return)
  - desk (30W x 54L)
  - task chair (2)
  - side chairs (3)
  - file cabinets (pictured: 30" wide)
  - freestanding acoustic panel (2" thick, custom order to be 4' wide)



Steelcase  
Amia Chairs  
Conklin



Teknion Amicus  
Guest Chairs  
Conklin

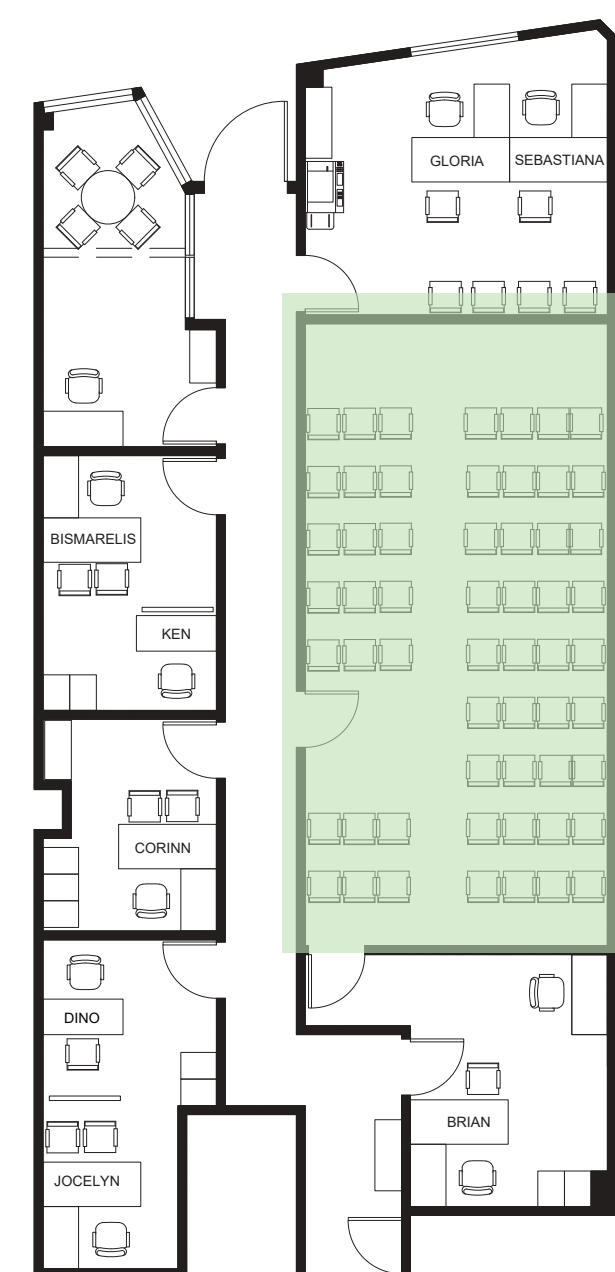


Steelcase File  
Cabinets  
Conklin



FreeStand  
Acoustic Panel  
GIK Acoustics  
(\$127)





# Classroom (595 SF)



FreeStand Acoustic Panel  
GIK Acoustics  
(\$127)



GIK Acoustics options for solid and custom art panels

## ACOUSTIC PANELS

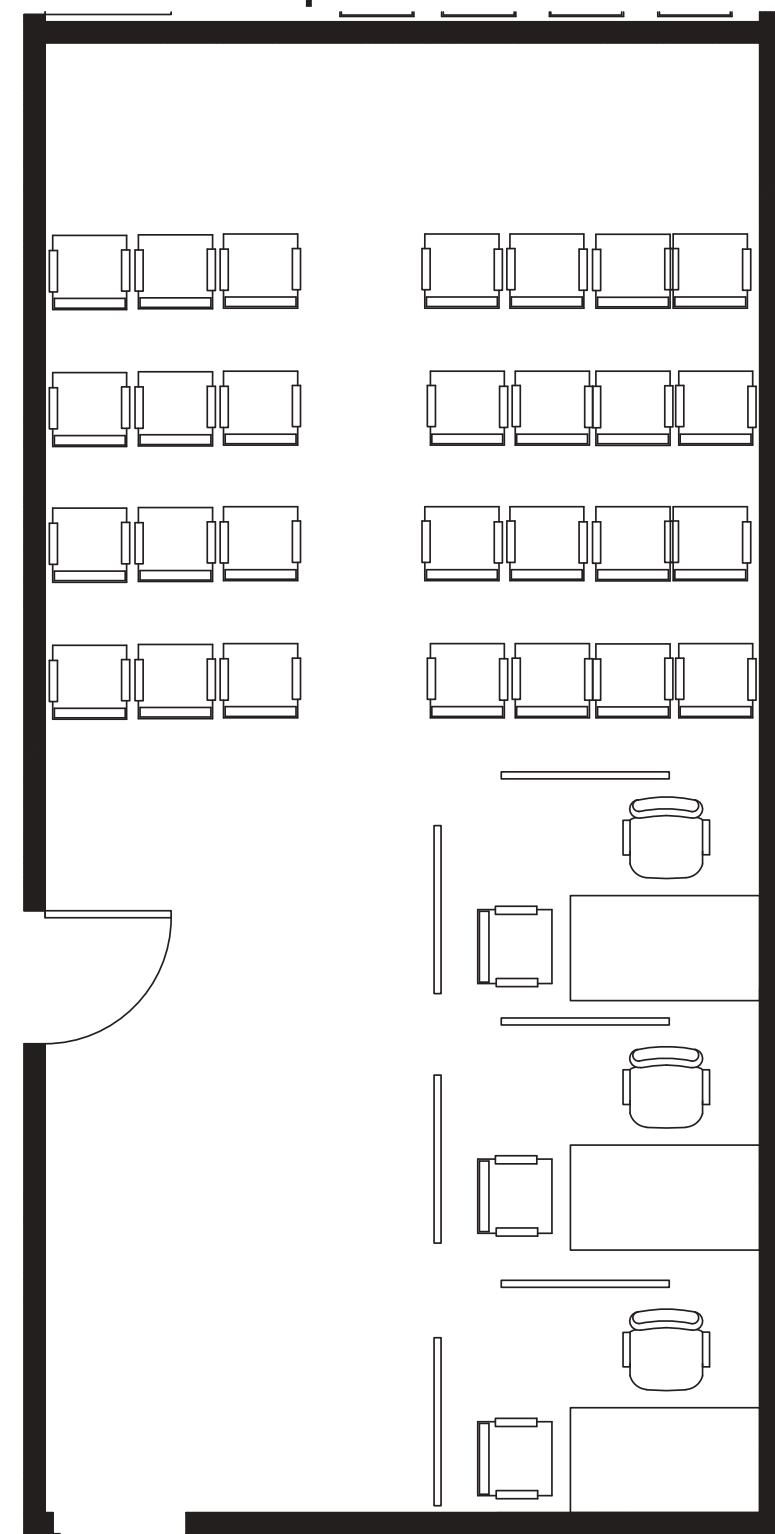
- ATS acoustics has coffee bag panels: cool but not fire-rated
- GIK acoustics is cheaper, fire rated
- about 12-16 panels needed
- shown: 2'x3'x2" (\$49)
- 2'x2'x2" (\$37.50)

## Needed:

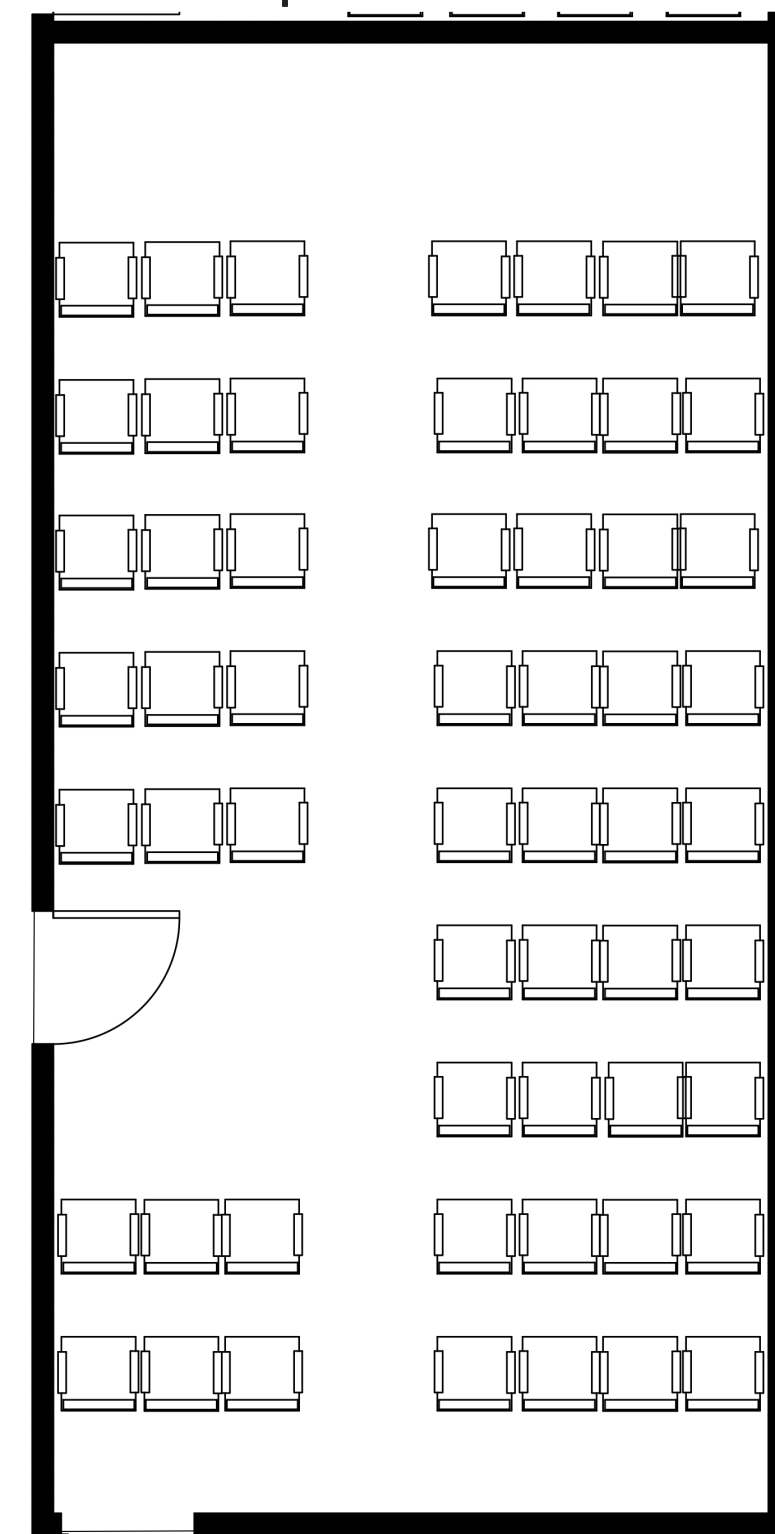
- 25 stacking chairs (can seat 31 people with benching)
- whiteboard
- folding tables (3/4)
- 6 benching desks (42")
- task chairs (9)
- 3 cubicles (may be tight, exact dimensions needed)
- acoustic panels (12-16)
- Flor carpet tiles (~\$30/tile)

whiteboard

option 1



option 2

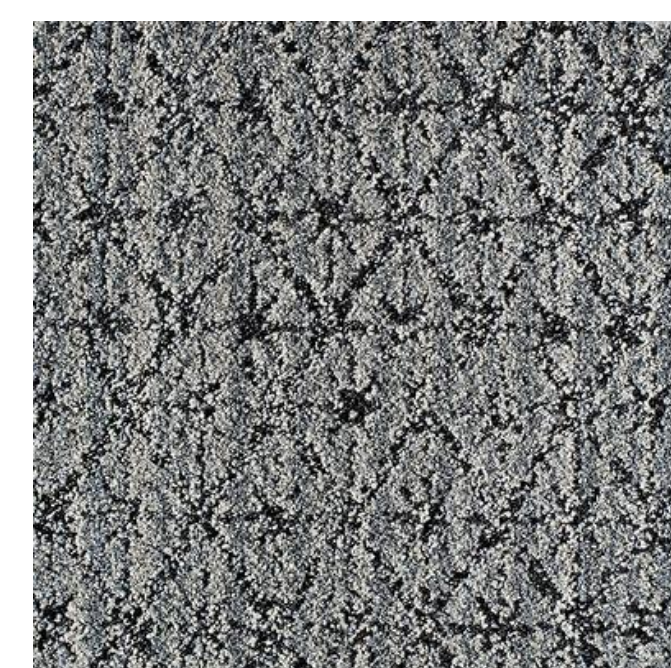
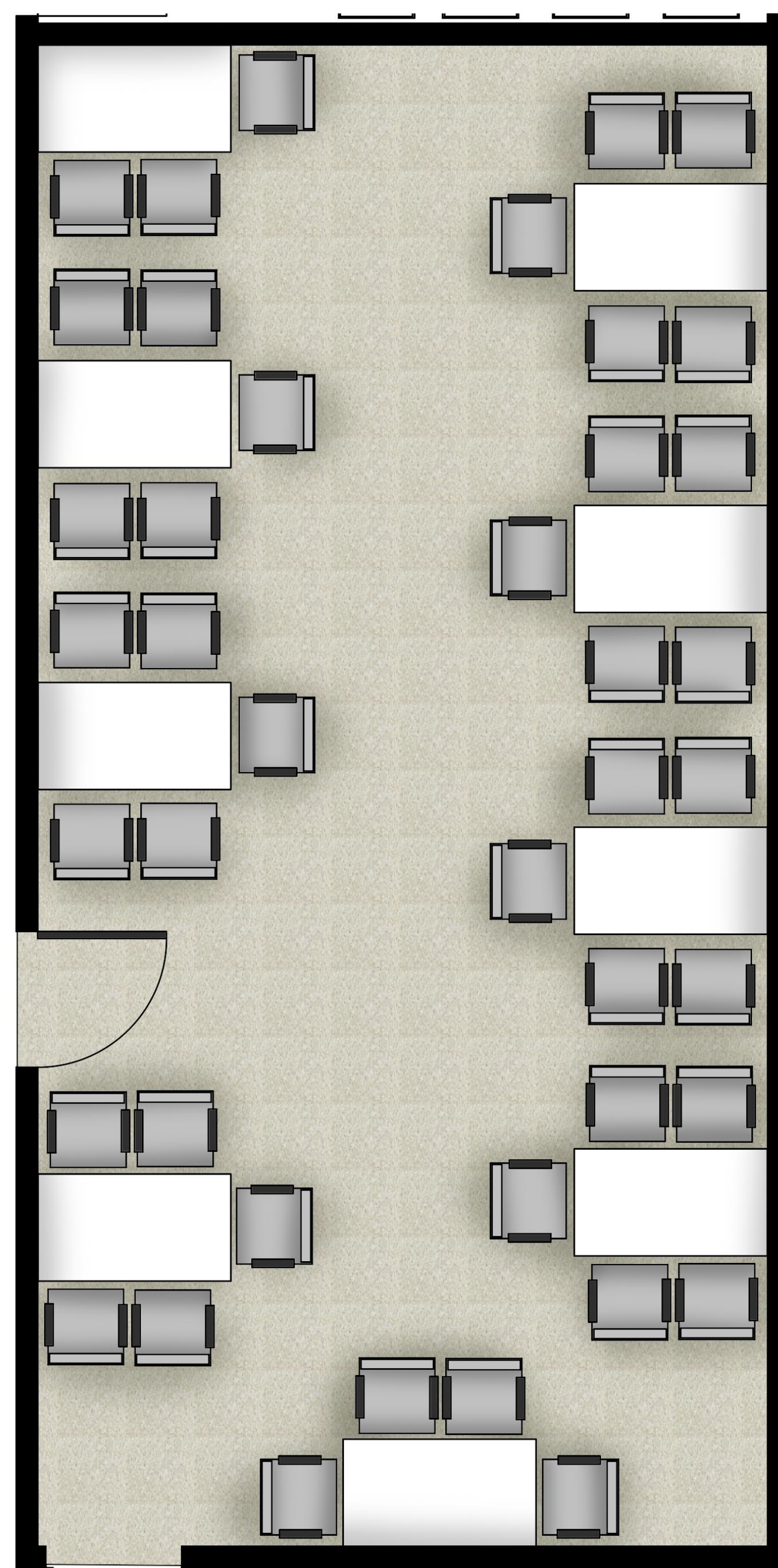


- temp working space
- moveable privacy screens and mobile pedestals

- Needed:
- 9-10 foldable tables
  - 3-5 mobile pedestals
  - 6 standing panels

- option for large quantity classroom seating
- fits 57 people

- Needed:
- 50+ stacking chairs



Vintage Vibe  
FLOR



Mobile Pedestal  
Conklin



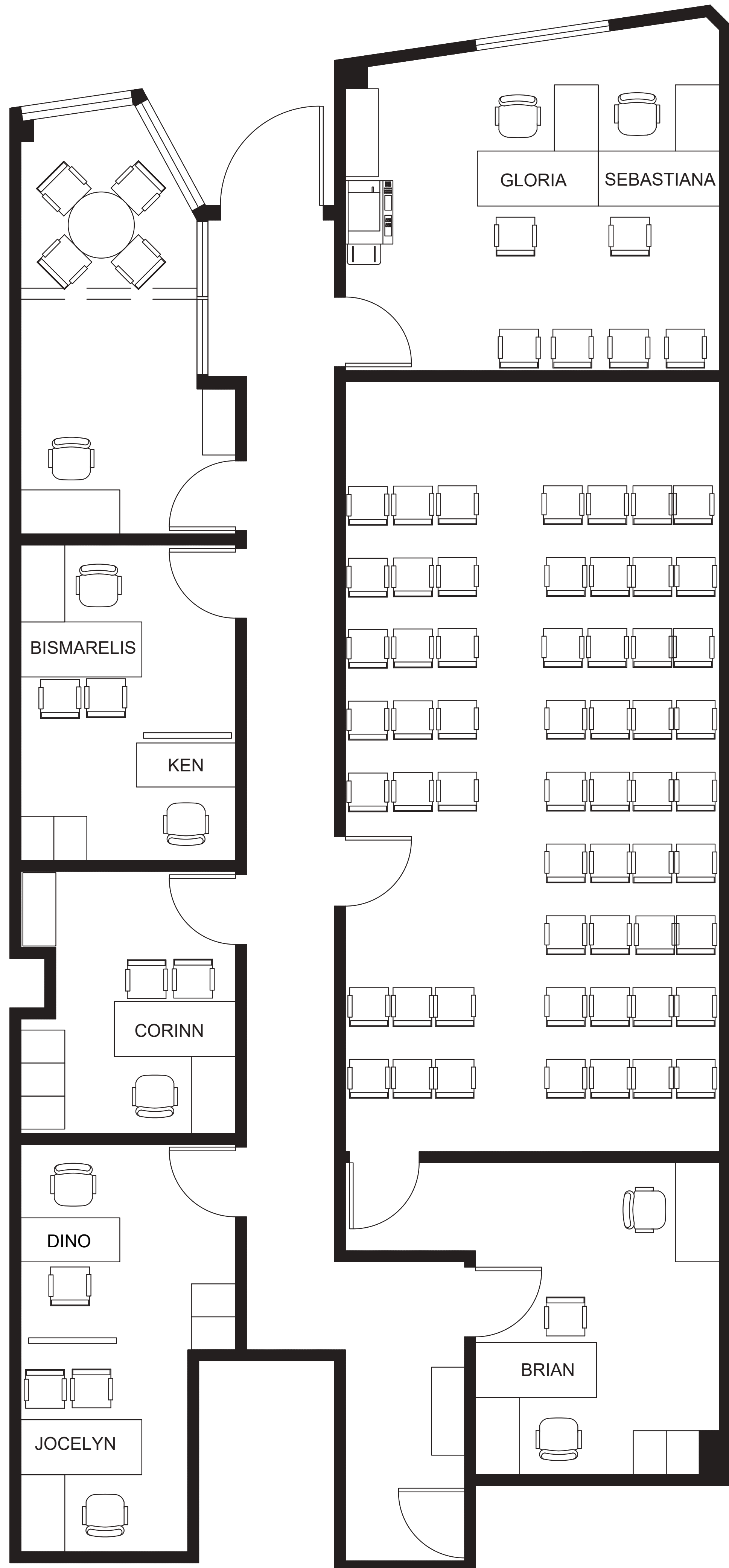
Steelcase Turnstone  
Stack Chairs  
Conklin



Training Tables  
Conklin



# Summary



## NEEDED

- Task chairs: 10
- Side chairs: 18-20
- L-desks: 6
- Desks: 4
- Nesting tables: 9-10
- File cabinets (18"W): 8-10
- Round table: 1
- OR
- 1 round, 1 square
- Various shelves: 4
- Acoustic divider: 8-10
- Acoustic panels: 12-16
- Mobile pedestals: 3-5

## LINKS

- Conklin: <https://www.conklinoffice.com/>
- GIK Acoustics: <https://www.gikacoustics.com/>
- FLOR: <https://www.flor.com/>

## CONKLIN QUOTES



Steelcase  
Amia Chairs  
Conklin

\$265 each



Steelcase Turnstone  
Stack Chairs  
Conklin

\$85 each



Stretch L-Shape Private Offices  
Conklin

\$983 each



GIK Acoustics  
options for solid and  
custom art panels

