

Accessibility Settings

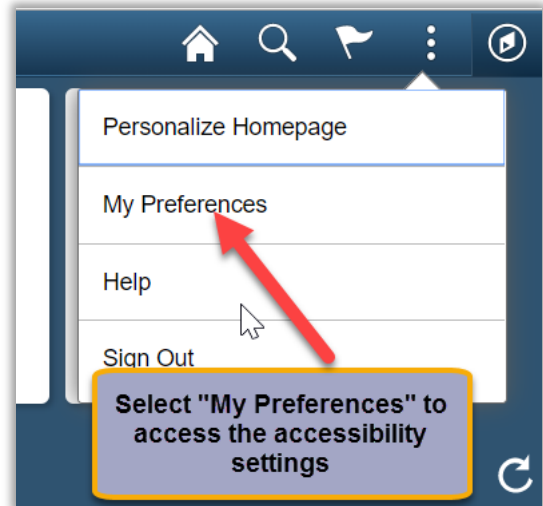
Accessibility settings can be modified from either a desktop or a mobile device.

Changing Accessibility Settings

1. Click on the Action List icon in the upper right corner (this is also referred to as the “ant menu”).



2. Select the My Preferences menu option from the list.
3. Select one of the follow settings from the Accessibility Layout drop down menu:
 - a. **Screen reader mode off** – Select this option to disable accessibility layout features (default option).
 - b. **Screen reader mode on** – Select this option to enable all of the accessibility features that are available, including the feature that presents the page in a linear format. This option is designed for blind users who use assistive technology, such as screen readers.



4. Click the Save button in the top right corner to save the settings.

