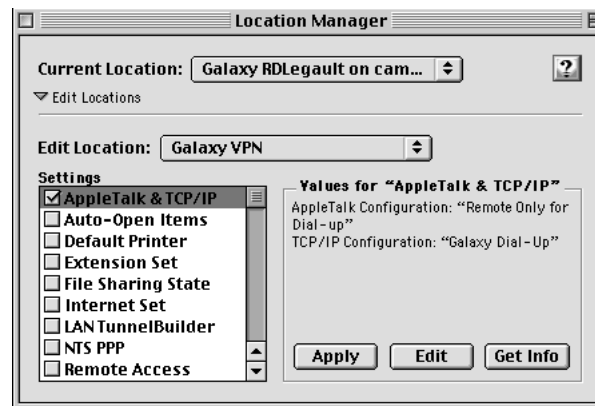


Using the Location Manager

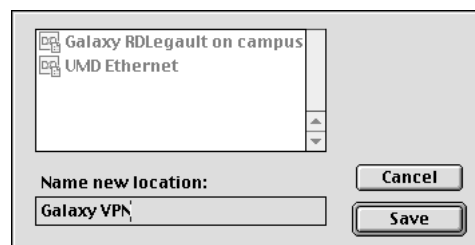
The **Location Manager** is a utility that comes with Macintosh System 7.6.1 through OS 9. It is used for switching between different groups of network settings. For example, if you had a PowerBook that you use at home as well as on campus, you could set the Location Manager to switch between the campus network and a dial-up ISP without having to change the TCP/IP and AppleTalk control panel setting by hand each time.

Setting up the Location Manager

1. Click the **Apple Menu**, and point to the **Control Panels** sub-menu. Click **Location Manager**. The Location Manager opens, as shown below.



2. If the Location Manager has not been used before, the **Current Location** pop-up menu may be grayed out, and read **None (Off)**. If this is the case, select **New Location** from the **File** menu, and name your new connection after your ISP. Then click **Save**.
3. Select **New Location** from the **File** menu to add another location. (You need at least two locations for this to work.) The New Location dialog box is shown below.

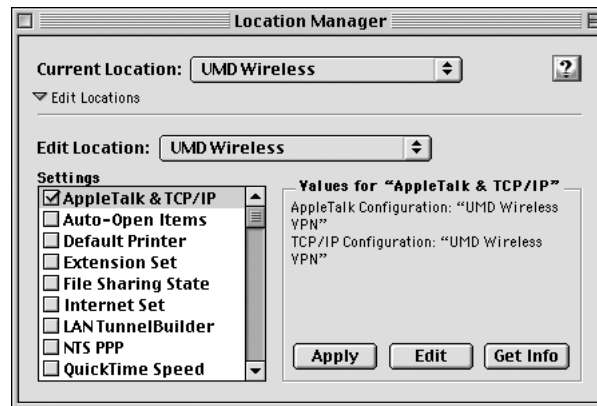


4. Name your new location "UMD Wireless VPN", then click **Save**. You now have at least two locations to work with.
5. In the **Edit Location** pop-up menu, select the location whose name ends with VPN.
6. In the **Settings** scroll box, click to place a check in the box next to **AppleTalk & TCP/IP**.

7. Click to highlight **AppleTalk & TCP/IP** if it is not already selected.
8. Click the **Edit** button. The edit settings dialog box opens, as shown below.



9. Click the **Open TCP/IP** button. The TCP/IP control panel opens.
10. Select **Configurations** from the **File** menu.
11. Click to select the configuration ending in Wireless VPN. Click the Make Active button.
12. Close the TCP/IP control panel. If you are asked to save changes, click **Save**. You may be warned of an interruption to IP services. Click **OK**.
13. Repeat the above procedure for AppleTalk.
14. Click **Apply**. The edit settings dialog box closes.
15. The Location Manager now looks similar to the window below.



16. In the **Edit Location** pop-up menu, select the location whose name does not end with VPN.
17. Repeat the procedure above for editing settings, selecting the configurations whose names do not contain 'VPN'.

Using the Location manager

To use the Location Manager, open the Location Manager control panel, and select the desired configuration from the **Current Location** pop-up menu. The TCP/IP and AppleTalk settings will be switched automatically. You do not need to restart your computer for these changes to take effect. The correct location must be selected in order to connect to the internet: The VPN location should be selected for use with a VPN connection.

Note that the locations can also be switched from the control strip at the bottom of the screen. If you have difficulty configuring or using the Location manager, contact Rich Legault at x8799 or email Rlegault@umassd.edu.