

Installing and Configuring the VPN Client Software for OS 8 and 9

The VPN software client used at UMass Dartmouth is NTS TunnelBuilder 5.0.9a. OSX version 10.2 users do not need VPN client software, as it is already part of the operation system. OSX Users should refer to the document Configuring VPN for OS X.

Acquiring this software requires a connection to the Internet. If you do not have a fast Internet connection available for your laptop, it would be easier to download the TunnelBuilder software to a CITS public lab computer, then copy the update to your computer using a Zip disk or other removable media.

To install TunnelBuilder:

1. Quit all open applications and close all open windows.
 2. Under the Apple menu, select Chooser. The Chooser opens.
 3. Click the **Appleshare** icon in the upper left section of the Chooser window.
 4. Click the **Server IP Address** button.
 5. Enter **134.88.123.229** into the address field, and then click **Connect**.
 6. Make sure that the **Registered User** radio button is selected.
 7. Enter 'wireless' into the **Name** field, and 'vpn' into the **Password** field. Click **Connect**.
 8. Click so that the **Wireless** volume is selected, but *do not* select the checkbox on the right side of the window. Click **OK**.
 9. Click the close box in the upper left corner of the Chooser window.
 10. Open the Wireless server on the desktop.
 11. Drag the TunnelBuilder folder onto the icon for your Hard Disk. The TunnelBuilder folder is copied onto your Hard Disk.
 12. Close the Wireless window.
 13. Drag the Wireless server icon to the Trash to disconnect.
 14. Open your Hard Disk.
 15. Open the **TunnelBuilder** folder.
 16. Double click the Install **TunnelBuilder International 5.0.9a** icon to launch the installer.
 17. Click the **Continue** button.
 18. Click the **Accept** button to accept the license agreement.
 19. Use the **Select Folder** button to select the **Applications (Mac OS 9)** folder.
 20. Click the **Install** button to install the selected TunnelBuilder VPN client software. The installer may ask permission to quit open applications. Click the **OK** button.
 21. When installation is complete, click the **Restart** button.
-

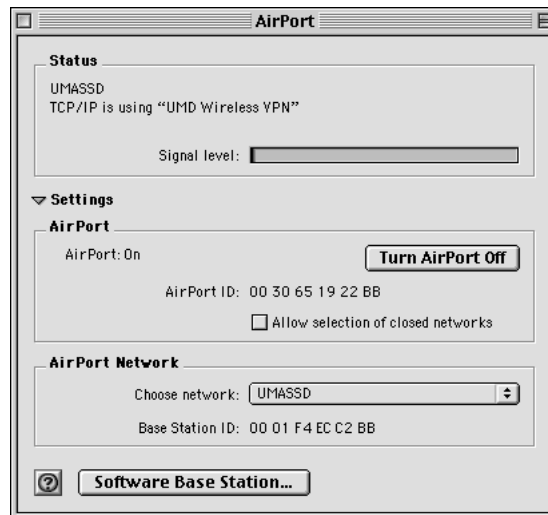
Configuring the VPN Client Software

To configure TunnelBuilder and OS 8.6-9x for use with the campus wireless network, follow these steps. When you are finished, please read the document on using the Location Manager.

Before proceeding, the wireless software should be turned on, and the UMass Dartmouth network should be selected. You *must* be in a wireless-accessible area to continue. Consult the Access Point Map for locations.

If you are using an Apple Airport card, follow these steps:

1. Click to open the Apple menu.
2. Look for Airport. If Airport is present, select it. Otherwise, Look in your Hard Drive, Applications (Mac OS9) -> Apple Extras -> Airport folder, and double click the Airport icon.
3. Airport opens. The Airport window is shown below:



4. If Airport is off, click the **Turn Airport On** button.
5. If it is not already selected, pick **UMASSD** from the **Choose network** pop-up menu.
6. Choose **Quit** from the **File** menu.
Note that you can also turn Airport on and off using the airport button in the Control Strip:
7. Proceed to Part I: Add a New TCP/IP Configuration.

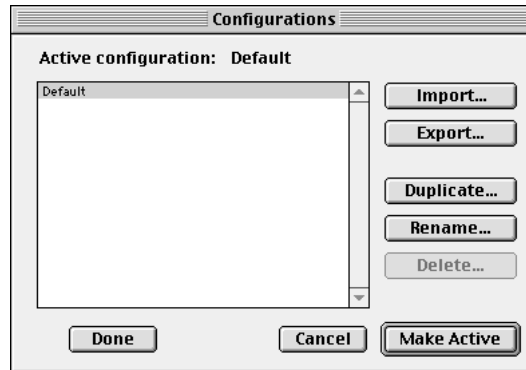


If you are using a RoamAbout card, follow these steps:

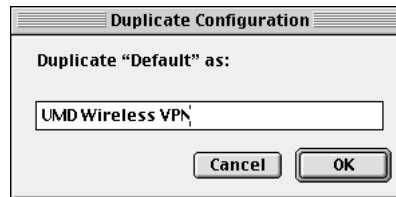
1. Insert the RoamAbout card into the PCMCIA slot.
2. Double click on the **RoamAbout 802.11 DS** icon on the desktop. The Appletalk control panel opens.
3. Select **RoamAbout 802.11 DS** from the **Connect via** pop-up menu.
4. Click the close box in the upper left corner of the Appletalk control panel, and click **Save**.
5. Click to display the Apple menu. Select **RoamAbout Setup** from the Control Panels submenu. The RoamAbout setup control panel opens.
6. In the RoamAbout Network field, enter 'UMASSD' (no quotation marks, all capitals).
7. Click the close box in the upper left corner of the RoamAbout Setup window.
8. Proceed to Part I: Add a New TCP/IP Configuration.

Part I: Add a New TCP/IP Configuration

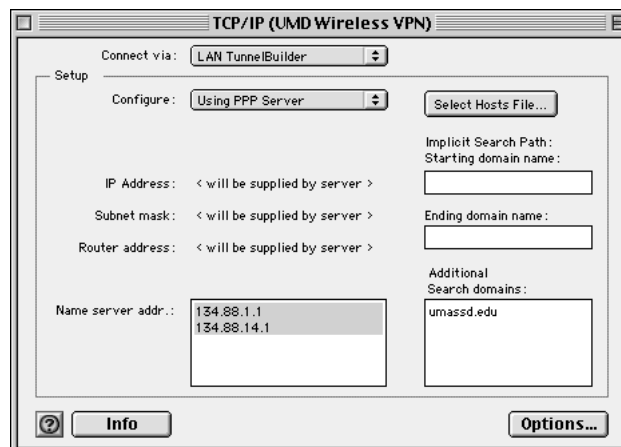
1. Click the **Apple Menu**, and point to the **Control Panels** sub-menu. Click **TCP/IP**.
TCP/IP opens, displaying your active connection information. The title bar usually shows the name of the active configuration in parenthesis. If it does not, the active configuration is called “Default”.
2. Select **Configurations** from the **File** menu. The Configurations dialog box opens, as shown below.



3. With the active configuration (probably called Default) selected, click **Duplicate**. The Duplicate Configuration dialog box opens, as shown below.



4. Type over the naming field, and enter “UMD Wireless VPN”.
5. Click **OK**. The Duplicate Configuration dialog box closes.
6. Click **Make Active**. The Configurations dialog box closes.
7. The TCP/IP control panel is shown below.

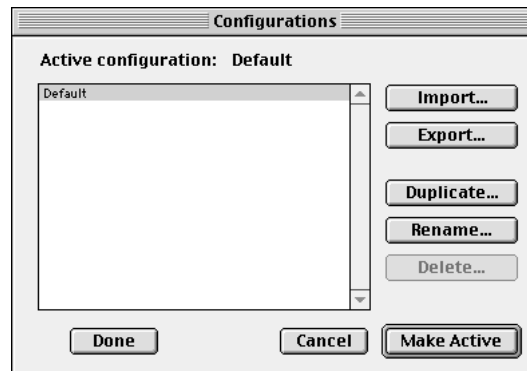


8. From the **Connect Via** pop-up menu in the TCP/IP window, select **LAN TunnelBuilder**.

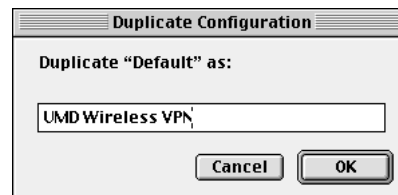
9. From the **Configure** pop-up menu select **Using PPP Server**.
10. Enter **134.88.1.1** and **134.88.14.1** into the **Name Servers** field
11. Click the close box of the TCP/IP window.
12. A dialog box asks if you want to save changes. Click **Save**.

Part II: Add an AppleTalk Configuration

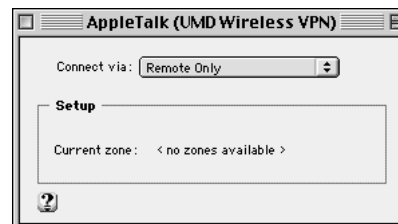
1. Click the **Apple Menu**, and point to the **Control Panels** sub-menu. Click **AppleTalk**.
AppleTalk opens, displaying your active connection information. The title bar usually shows the name of the active configuration in parenthesis. If it does not, the active configuration is called “Default”.
2. Select **Configurations** from the **File** menu. The Configurations dialog box opens, as shown below.



3. With the active configuration selected, click **Duplicate**. The Duplicate Configuration dialog box opens, as shown below.



4. Type over the text in the naming field, and enter “UMD Wireless VPN”.
5. Click **OK**. The Duplicate Configuration dialog box closes.
6. Click **Make Active**. The Configurations dialog box closes.
7. The AppleTalk control panel is shown below.

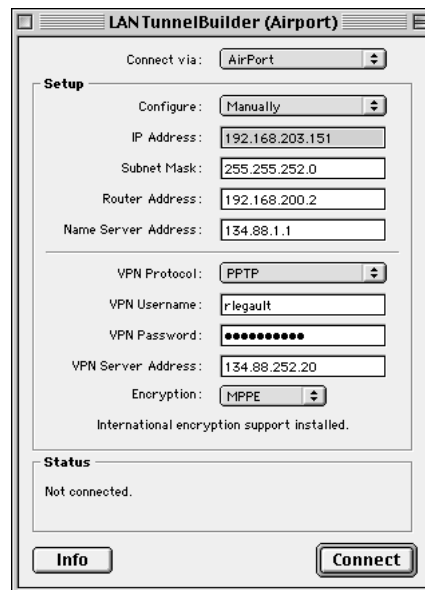


8. From the **Connect Via** pop-up menu in the AppleTalk window, select **Remote Only**.
9. Click the close box of the AppleTalk window.
10. A dialog box asks if you want to save changes. Click **Save**.

Part III: Configure TunnelBuilder

1. Double Click the **Macintosh HD** icon, or whatever drive you chose during the TunnelBuilder installation.
2. Open the Applications (Mac OS 9) folder, or whatever folder you chose during the TunnelBuilder installation.
3. Double click the **NTS TunnelBuilder** folder icon.
4. Double click the **LAN TunnelBuilder Settings** icon. TunnelBuilder opens.
5. Select **Configurations** from the **File** menu. The Configurations dialog box opens.
6. With the active configuration selected, click **Duplicate**.
7. Type over the text in the naming field, and enter “UMD Wireless”.
8. Click **OK**. The Duplicate Configuration dialog box closes.
9. Click **Make Active**. The Configurations dialog box closes.

The LAN TunnelBuilder application window is shown below.



10. Set **Connect Via** to Airport or RoamAbout 802.11, depending on which card you use.
11. Set **Configure** to Manually.
12. Set **IP Address** to the address you received with your VPN username and password. It should begin with 192.168.
13. Set **Subnet Mask** to 255.255.252.0
14. Set **Router Address** to 192.168.200.2
15. Set **Name Server Address** to 134.88.1.1
16. From the **VPN Protocol** pop-up menu, select PPTP.
17. Enter your **VPN Username** and **VPN Password** into the corresponding fields. Your VPN username is the same as your Alpha username. Your VPN Password is a random sequence of characters, and can be picked up at the Computing Support office in Group I, Room 222.
18. In the **VPN Server Address** field, enter **134.88.252.20**
19. From the **Encryption** pop-up menu, select MPPE.
20. From the **File** menu, choose **Save**.

Part IV: Using the Wireless Network with TunnelBuilder

You are now ready to connect to the wireless network using your wireless card in conjunction with the UMass Dartmouth VPN server.

Click the **Connect** button to connect. The **Status** area at the bottom of the window shows the connection process, and can be used to troubleshoot and connection problems. The Connect button changes to read **Disconnect** once the connection has been made. Now you can use IP-based software normally. AppleTalk does not function with the wireless network. Don't forget to disconnect when you are through. When you have disconnected, choose **Quit** from the **File** menu to exit TunnelBuilder. Clicking the close box also quits the program.

Note that Connections can be established and disconnected using the TunnelBuilder addition to the Control Strip.



If you have difficulty with the installation configuration, or use of the TunnelBuilder software, or general questions about using the UMass Dartmouth wireless network with your Macintosh computer, contact Rich Legault at x8799 or email RLegault@umassd.edu.