

VPN INSTRUCTIONS FOR WINDOWS 98/ME CLIENTS

IMPORTANT INFORMATION

There are two important issues that must be addressed before a wireless network connection to the VPN server can be established.

First, your notebook must be running the Windows98/ME Second Edition of the operating system. To check your operating system version, **right-click My Computer**, select **Properties** and the system information is located on the **General Information Tab**. If the Second Edition is not installed, you must upgrade your operating system before you are able to use the wireless network.

Second, when Microsoft configured the Windows 98/ME OS, the files needed for the Virtual Private Network were not automatically included in the installation. You **must** have your notebook's original System CD ROM to complete VPN installation on your notebook. Configuring the VPN connection cannot be accomplished without it.

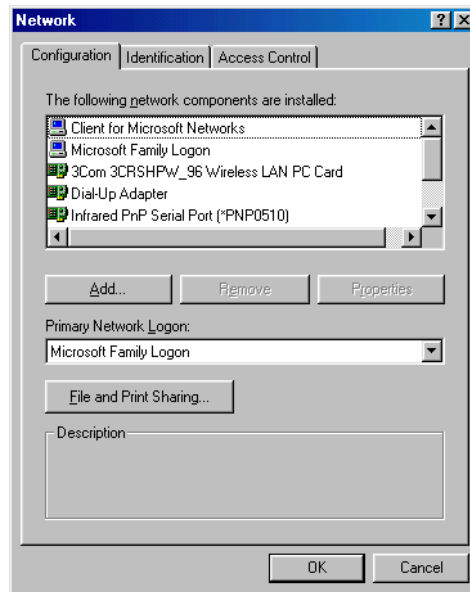
Configuring the Connection

Insert wireless card

Right-Click the **Network Neighborhood** and select **Properties**.

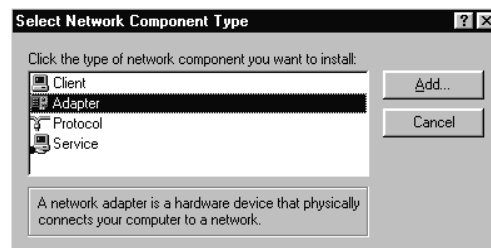
*** Please note that the contents of the configuration tab will vary from system to system.*

The Network Properties window displays.



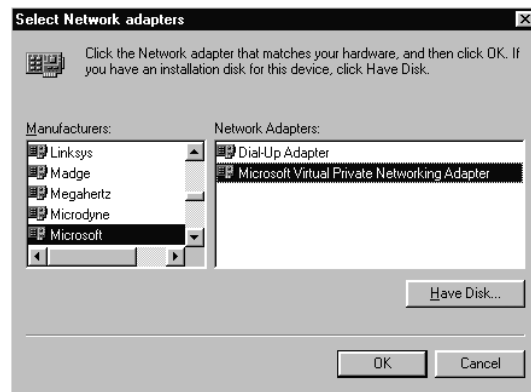
- Click **Add**

The Select Network Component Type window displays.



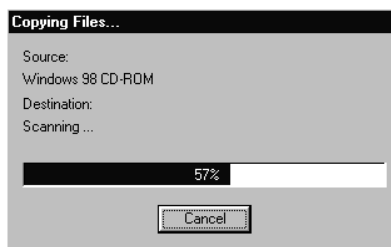
- Click **Adapter**
- Click **Add**

The Select Network adapters window displays.

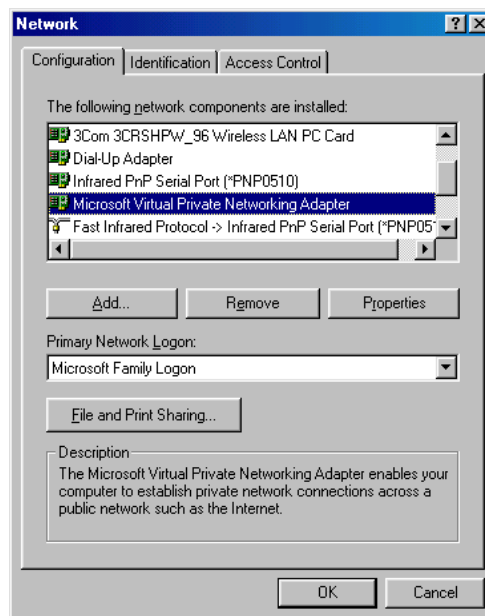


- From the *Manufactures:* list, select **Microsoft**
- From the *Network Adapters* select **Microsoft Virtual Private Networking Adapter**
- Click **OK**

At this point, the user may be prompted for the **Windows 98 or ME CD ROM** for copying additional files needed. After copying the necessary files, the process takes the user back to the network properties window.



The Network Properties window displays.

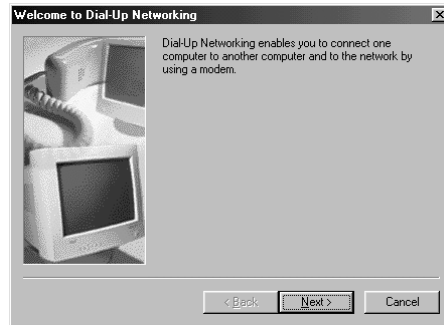


The **Microsoft Virtual Private Networking Adapter** has been added to the list of adapters.

- Click **OK** to close the network properties window

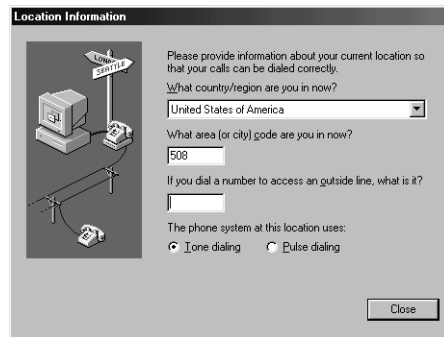
- Double-click **My Computer**
- Double-click **Dial-Up Networking**

The Welcome to Dial-Up Networking window displays.



- Click **Next**

The Location Information window displays.



- Enter your **area code --> 508**
- Click **Close**

The *Make New Connection* wizard starts automatically. (If the wizard doesn't start, double-click the *Make New Connection* icon in Dial-Up Networking.)

Make the New Connection to the VPN

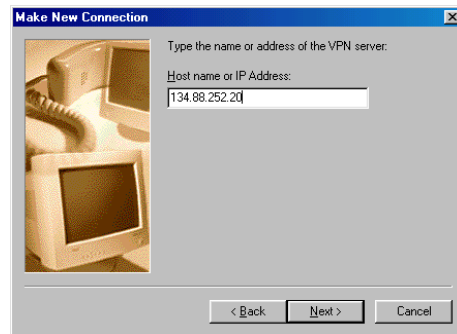
- (Double-click Make New Connection in Dial-Up Networking window.)

The Make New Connection window displays.



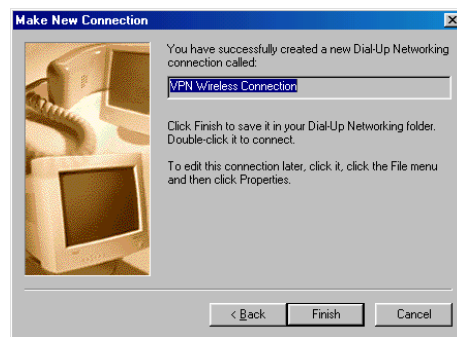
- Type **VPN Wireless Connection** under *Type a name for the computer you are dialing:*
- Select the **Microsoft VPN Adapter** from the *Select a device:* pull down list
- Click **Next**

The Make New Connection windows displays for IP Address.



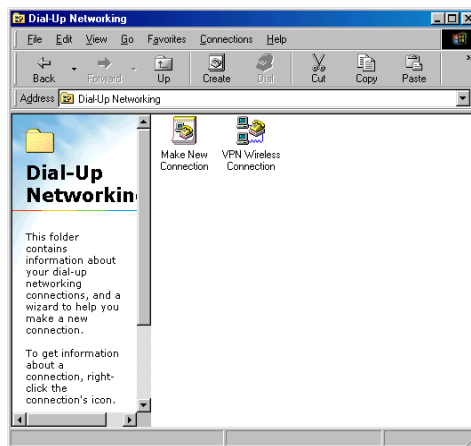
- Under *Host name or IP Address*: type **134.88.252.20**
- Click **Next**

The Make New Connection window displays stating the connection has been created successfully.



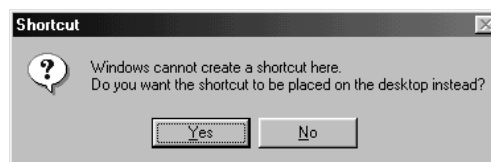
- Click **Finish**

The VPN Wireless Connection icon displays under *Dial-Up Networking*



Right-Click the **VPN Wireless Connection** icon and select **create shortcut**.

Do you want the shortcut on the desktop?



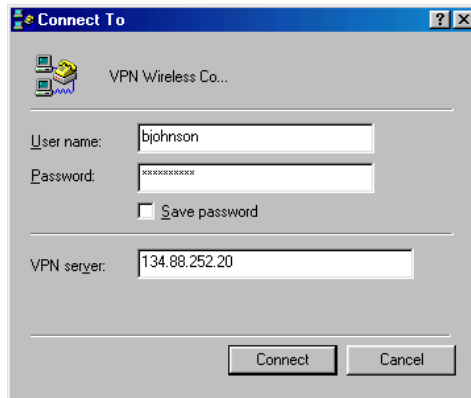
- Click **Yes**

The **VPN Wireless Connection** shortcut is displayed on the desktop.

Connecting to the VPN

- **Double-click** the **VPN Wireless Connection** icon. The following window displays:

The Connect to VPN Wireless Connection dialog box displays.



- Type **Username** and **Password**. Check **Save password**, if you want.
- Click **Connect**

The connection progress is shown as follows:

Verifying username and password.



The user is logged into the network.




You are connected to VPN Wireless Connection.



- Click **Close**

As an option, the user can select the box next to ***Do not show this dialog box in the future*** to avoid seeing this window the next time a connection is established successfully.

A connection icon will also be displayed on the taskbar  (lower right-hand corner) every time the user connects successfully. Double-click this icon to get connection statistics.

If you have any problems configuring the connection, please contact the IT Service Center at x8790.